



PRODUCT CATALOG

A man with short brown hair, wearing a dark blue and red racing suit, is shown in profile from the chest up. He is looking out from a cockpit, with a blurred background of a racetrack and other vehicles. The lighting is bright, suggesting an outdoor setting.

QUALITY

YOU CAN RELY ON

Quality is in the details. It begins with raw materials and ends with on-time delivery to the customer. In between there is a multitude of production steps, all of which must be planned and executed, utilizing modern and fully automated production systems. As original equipment partner, HOFMANN POWER WEIGHT guarantees products of the highest quality.

INNOVATION *THAT INSPIRES*

HOFMANN POWER WEIGHT develops and manufactures balancing weights in OEM quality and high-quality universal weights for cars, trucks and motorcycles. As a premium manufacturer we are world market leader in this segment and offer convincing innovations down to the smallest detail, as well as absolute precision in large and small series.



SERVICE

FOR THE HIGHEST DEMAND

HOFMANN POWER WEIGHT supports its customers with fast, competent and service-oriented customer support. With numerous plants and sales companies on four continents, HOFMANN POWER WEIGHT ensures professional service on site and offers first-class logistics and sales worldwide – because service comes first.





LEGEND

Zinc	Aluminium Rim	Passenger Car	Coated
Lead	Steel Rim	Motorcycle	SPEEDLINER® Technology
Steel	YouTube	Light Truck	OEM Product
Poly-Propylene		Truck	Fingerlift

THE BRAND // 10

THE PROMISE // 12

THE IMPORTANCE OF BALANCING // 14

PASSENGER CAR WEIGHTS // 17

 PASSENGER CAR KNOCK-ON WEIGHTS // 19

 KNOCK-ON WEIGHTS FOR STEEL RIMS // 20

 KNOCK-ON WEIGHTS FOR ALUMINIUM RIMS // 22

 LEAD KNOCK-ON WEIGHTS // 24

 PASSENGER CAR SAFETY WEIGHTS // 25

 PASSENGER CAR // 29

 ADHESIVE WEIGHTS FOR ALUMINIUM RIMS // 30

 ADHESIVE ROLLS FOR ALUMINIUM RIMS // 32

 SPEEDCUT® AND ACCESSORIES // 33

MOTORCYCLE WEIGHTS // 38

 SPOKE WEIGHTS FOR ALUMINIUM RIMS // 40

 ADHESIVE WEIGHTS FOR ALUMINIUM RIMS // 41

TRUCK WEIGHTS // 43

 KNOCK-ON WEIGHTS FOR TRUCK RIMS // 44

 ADHESIVE WEIGHTS FOR TRUCK ALUMINIUM RIMS // 46

 BALANCING COMPOUND // 47

SPECIAL TOOLS & PASTES // 51

VALVES // 54

 PASSENGER CAR // 56

 SNAP-IN // 56

 METAL VALVES // 57

 ACCESSORIES FOR PASSENGER CAR // 59

 TRUCK // 60

 ACCESSORIES FOR TRUCK // 62

 TRACTOR // 63

 EARTHMOVER // 64

 MOTORCYCLES & SCOOTER // 65

TPMS SERVICE KITS // 66

 UNIVERSAL SERVICE KIT U1 // 68

 TPMS TOOL KIT // 73

CUSTOMER SERVICE & ORDERING // 74

MILESTONES OF A SUCCESSFUL STORY

WITH A TRADITION OF INNOVATION AND WORLDMARKET LEADERSHIP

1931 COMPANY ESTABLISHMENT



In 1920, as a chief engineer for agricultural machinery, Dionys Hofmann Senior began to develop balancing machines and founded his first company in 1931

in Germany.

In 1933, Dionys needed more space to accommodate his growing business and therefore acquired a larger premise in the city of Darmstadt together with his brother Roman. The company, named Dionys Hofmann, was later relocated to Genkingen near Tuttingen. By a lucky coincidence, in 1947 there were several vacant textile companies in Onstmettingen (today known as Albstadt) that were available for rent: the company then moved again and started the production of balancing machines on a larger scale. As production grew into mass production, Dionys was facing a new challenge: the need to acquire raw materials such as steel and iron, both of which could only be purchased through a ration card at the time. Through barter transactions, the company was able to flourish and mass production by machines was possible.

The company was able to employ more than 80 people and enjoyed great success in its early formation.



The early days in the foundry

1949 FIRST WEIGHTS PRODUCTION

A need was realized for something simple and easy to aid in the balancing process of wheels. After making the first hand mold from plaster, Dionys collected from the local gun club lead scrap bullets to use them as raw material: in this way, the first lead wheel weights were born. Because money in 1951 was a problem, the path to the first wheel weight production building was hard. After closing time, the workforce worked at night with pick and shovel to dig the groundwork for a new facility. Those individuals laid the foundation of the commitment to hard work, which is still seen in our workforce today.

1951 WORLD RECORD BY WILHELM HERZ

An unforgettable day in 1951 for Dionys Hofmann and his workforce: motorcycle racer Wilhelm Herz personally came to Onstmettingen to balance his wheels at the Dionys Hofmann facility. The long journey rewarded Wilhelm well, as with his perfectly balanced wheels he set a new world speed record. On the motorway Munich - Ingolstadt he reached 284.8 km/h. The Hofmann wheel weights had passed their first test with flying colours.



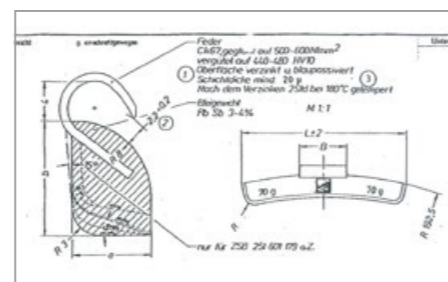
Wilhelm Herz



Production building Albstadt



Wilhelm Herz with his motorcycle



Technical drawing of a knock-on weight

1965 CASTING BY HAND

The business flourished in the following years. In 1965, more than 60 workers were employed in the wheel weight foundry, each of them producing about 2,500 wheel weights per day.



Casting by hand



Company headquarters Veitshöchheim

2011 EXCLUSIVE SUPPLIER OF FORMULA 1 CLASS

Beginning with the 2011 race season, HOFMANN POWER WEIGHT became the proud supplier of Formula 1 class vehicles. As a partner and supplier of balancing weights for all types of motorsports, race teams and drivers are able to benefit from the use of our innovative balancing products under extreme conditions. Features like the quick and easy application and the strong adhesion of our products play a crucial role in motorsports. Our engineers work closely with many racing teams and motorsport professionals, oriented towards delivering innovative products to the individual customers, with a focus on high precision and safety in any condition. The gained technical knowledge flow directly into series production: in this way each driver always starts off with the most innovative and safest weight on his own personal vehicle.



Exclusive supplier of Formula 1 class



Development of the first zinc knock-on weights



SPEEDLINER® Tape



Fully automatic application

1931

Foundation of the company

1949

Production of the first weights

1951

Wilhelm Herz sets world record with balancing weights from HOFMANN POWER WEIGHT

1960

Production of the first safety weight (2-piece) for MERCEDES-BENZ

1966

Development and production of the first adhesive weight for PORSCHE

1978

Development of knock-on weights for AUDI and VOLKSWAGEN

2001

Development of the first zinc-balancing weights on the basis of the EU ELV Directive

2006

Opening of a new and modern production site in Veitshöchheim (in order to be prepared for the future).

2011

Exclusive supplier of the Formula 1 class

2012

Introduction of the SPEEDLINER® tape

2014

Expansion of the product range to include valves

2015

Expansion of the product range to include TPMS Service Kits

2016

First fully automatic application of balancing weights for OEMs

2018

Introduction of the Universal Service Kit U1

FOR EACH WHEEL ITS OWN WEIGHT

HOFMANN POWER WEIGHT OFFERS A FULL RANGE OF WHEEL BALANCING WEIGHTS FOR EVERY RIM TYPE.

Whether as a partner in OEM or as a supplier in the spare parts business, you always benefit from the full expertise of the market leader HOFMANN POWER WEIGHT – across the entire product range.

MAXIMUM ADHESIVE STRENGTH – SPEEDLINER® TECHNOLOGY

All adhesive bars are equipped with a perforated tape with the innovative SPEEDLINER® technology. Thanks to the perforation, the individual segments can be separated easily and without tools. The SPEEDLINER® tape is a great relief for the work in the workshop, above all its residue-free removal during subsequent disassembly of the weights.

By using our high performance adhesive tape in OEM quality an adhesive strength of min. 30 N/cm² is guaranteed. Furthermore, all adhesive tapes resist an ambient temperature test with a continuous load from -40 °C to +100 °C (for short-term radiant heat even up to +230 °C).

All zinc adhesive weights are manufactured, using a unique manufacturing method with fine zinc alloy. This ensures high deformability, which significantly simplifies pre-bending during installation.

PERFECT FIT

HOFMANN POWER WEIGHT's knock-on wheel weights are made of a fine zinc alloy. The many available weight types and sizes, assure the best fit to any type of rim. In addition, the extra-strong clips meet OEM requirements and provide a secure fit in all driving situations.



PREMIUM COATING & HIGHEST CORROSION PROTECTION

Coated balancing weights preserve any rim from damage due to contact corrosion. High quality OEM coating optimally protects the weight against environmental influences, even under extreme conditions. Please see the comparison of coated / uncoated weights in self-test on the right hand side. All weights are correspondingly subjected to OEM specifications 480 hours salt spray test according to DIN EN ISO 9227 and ASTM B117.



COATED WEIGHTS:
Sealed epoxy finish. The result: no oxidation of surface.



UNCOATED WEIGHTS:
Contact corrosion of surface.

COMPARISON COATING



UNCOATED WEIGHT:
Contact corrosion of the surface.



COATED WEIGHT:
No corrosion.

REASON FOR CONTACT CORROSION:

Electric charge of various materials

- Al - 1,69
- Zn - 0,76
- Fe - 0,44
- Pb - 0,13
- Cu + 0,35
- Au + 1,38

The more electronegative charged material is attacked by the lower one.

CERTIFIED QUALITY

After being successfully certified in 1995, according to DIN EN ISO 9001, we expanded our efforts in 1998 to the extension to the QS-9000 and VDA 6.1 – with success.

In April 1998 we were certified as the first OE manufacturer of wheel balancing weights in Europe, according to DIN EN ISO 9001, QS 9000 and VDA 6.1. In 2004, the certification of ISO/TS 16949:2002 and ISO 14001 was achieved. Since May 2010, we are certified to ISO/TS 16949:2009 with Product Development, as well as to ISO 9001:2008 with product design and UM 14001:2009 with product development. In March 2015 we were additionally certified, in accordance to ISO 50001 (energy management system). Since 2018, we are certified to ISO 9001:2015 and IATF 16949 as well as to ISO 14001:2015.



PERFORMANCE GENERATING STANDARDS

Our success speaks for itself – nearly every major automotive manufacturer (OEM) in the world relies on HOFMANN POWER WEIGHT balancing weights.

The comprehensive product range, the on-site support and short-term delivery provide a reliable basis for partnership with "global players". The millions of used products convince with the highest quality – German Engineering.

THE PROMISE



2012 Winner Q1 Award – FORD awards high delivery reliability and quality



Volvo Quality Excellence Award 2015 – Volvo awards high delivery reliability and quality



THE IMPORTANCE OF BALANCING



MORE SAFETY

OPTIMUM FUNCTION OF ABS, ESP AND SHORTER BRAKING DISTANCE

LESS WEAR

REDUCED STRESS OF TIRE AND WHEEL SUSPENSION

At a speed of 100 km/h, the centrifugal force of a 10 g imbalance is equal to that of a sledge hammer. By doubling this speed, the forces involved quadruple. Vehicles with poorly balanced wheels become dangerous:

- More stress on wheel suspension components and bearing points
- Noticeable vibrations on the steering wheel and in the interior
- Body subjected to greater physical stress
- Increased brake wear
- Increased heel and toe wear on tires
- Increased braking distance

"[...] balancing is not some sort of luxury, but a technical necessity, not just for driving comfort, but also and especially so for safety purposes."
DEKRA Info, November 2018

"[...] when fitting new wheels, but also at the seasonal wheel change, balancing of the wheels is an essential part of proper and professional wheel fitting."
DEKRA Info, November 2018

TYPES OF IMBALANCE

Two different types of imbalance can be found on a wheel:



STATIC IMBALANCE:
The wheel has a tendency to jump.



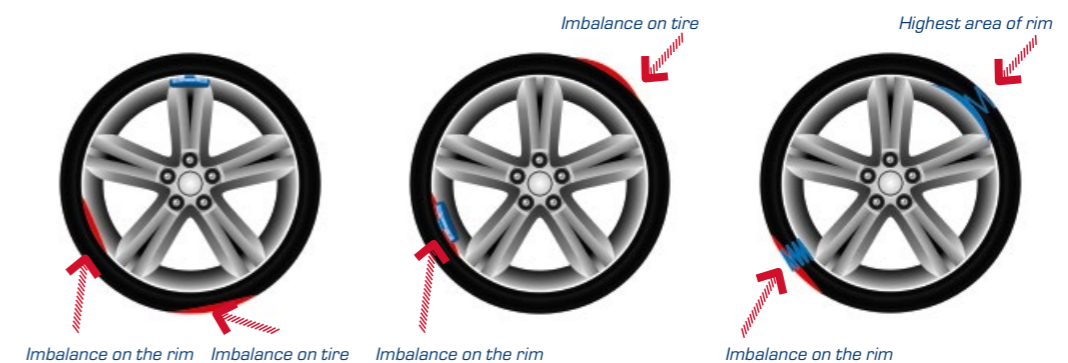
DYNAMIC IMBALANCE:
The wheel has a tendency to wobble.



MORE COMFORT

NO VIBRATIONS ON THE STEERING WHEEL AND IN THE INTERIOR

CORRECTING IMBALANCE ON TIRES AND RIMS



1. BALANCING

The imbalance of the tire and rim is measured by the balancing machine and it is corrected using HOFMANN POWER WEIGHT balancing weights.

2. MATCHING

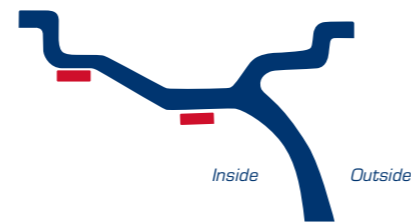
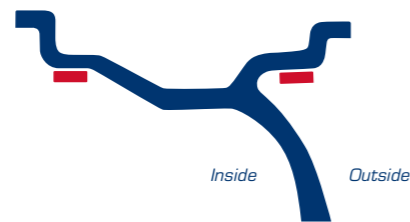
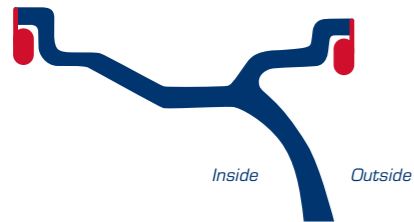
This workshop procedure involves turning the tire on the rim until the sources of imbalance on the rim and tire are opposite to each other. The residual imbalance is compensated by HOFMANN POWER WEIGHT balancing weights.

3. SMOOTH RUNNING OPTIMISATION

A flaw of the rim can only be compensated by uneven tire deflection. Smooth running optimisation involves placing the heavy and hard area of the tire opposite the highest area of the rim. The residual imbalance is compensated by HOFMANN POWER WEIGHT balancing weights.

THE SIX OPTIONS OF BALANCING

PASSENGER CAR WEIGHTS



1. OPTION

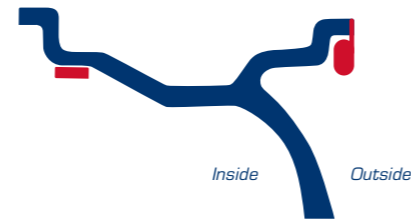
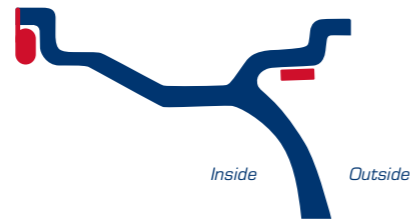
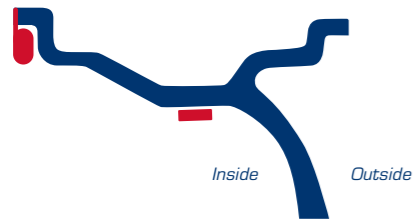
Balancing using knock-on or safety weights for both levels. This type requires least mass for balancing. Most car manufactures use this option.

2. OPTION

Balancing by using adhesive weights for both levels. The weights are affixed to the inner or outer plane of the wheel in the outermost positions.

3. OPTION

Both adhesive weights are affixed on the inside of the wheel rim. The external balance level is in this case transferred back behind the spokes.



4. OPTION

The outer balancing level is relocated inside and the adhesive weight is attached to the rim centre in the brake disc area. A knock-on or safety weight is attached to the inner rim flange.

5. OPTION

An adhesive weight is used on the outside of the rim. It is attached to the outermost position of the wheel. A knock-on or safety weight is used at the inner wheel rim flange.

6. OPTION

On the outer side of the wheel rim, a knock-on or safety weight is used on the rim flange. An adhesive weight is used on the inside of the wheel rim. The weight is affixed to the rim centre in the outermost position.



PASSENGER CAR KNOCK-ON WEIGHTS

INSTALLATION OF KNOCK-ON WEIGHTS

WITH THE NEW KNOCK-ON AID YOUR ROUTINE IN THE WORKSHOP WILL BE EASIER AND EVEN SAFER.

The knock-on aid with integrated magnet supports you when mounting the weights..

IHRE VORTEILE:

- No more bruised fingers.
- Injury-free and safe assembly of balancing weights.
- Easier handling, especially for smaller, awkward weights (5 to 15g).
- Increased work safety and avoidance of downtime due to employee injuries.



SELECTION OF THE PERFECT WEIGHT

Before the installation, select the appropriate weight from the HOFMANN POWER WEIGHT range, taking into account the shape of the rim. The rim flange thickness varies (steel rim / aluminium rim) and different rolling processes are used.

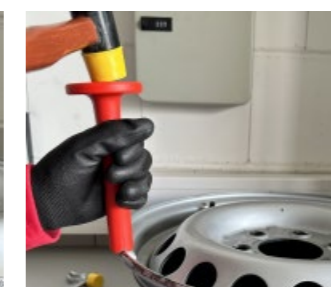
Put the weight beside the rim flange before installation to check the shape.



PLACING THE WEIGHT IN THE HOFMANN POWER WEIGHT KNOCK-ON AID

Place the weight centrally in the notch. It will be held securely in place by the magnet.

Make sure that the clip is correctly positioned on the rim flange before striking the weight.



STRIKING THE WEIGHT

Hold the knock-on aid vertically to the rim flange. A maximum of two strong strokes should be applied for mounting. This ensures that the coating of the weight is not affected.



CHECKING THE PROPER INSTALLATION

After application, make sure that the weight is securely fitted.



KNOCK-ON AID

Injury-free and safe assembly of knock-on weights. Especially for small, unwieldy grammages (5 - 15 g)

Content: 1 x Knock-On Aid

Part number: 0401-0001-003



With magnetic holder



CLICK ME

KNOCK-ON AID:
Fitting knock-on weights injury-free



NOTE The suitable weights can be found with the weight configurator:
www.hofmann-powerweight.com

KNOCK-ON WEIGHTS FOR STEEL RIMS



TYPE 160

Original part of: FORD
The weights are mainly designed for the application on slim steel rims (rim flanges of 1.5 to 1.8 mm).

Available sizes: 5, 10, 15, 20, 25, 30, 35, 40, 45, 50, 55, 60 g

Packaging units: 5 - 30 grams, 100 pieces/box
35 - 60 grams, 50 pieces/box

Part number: 5160-OXX0-001



TYPE 161

Universal weight for European steel rims, available in Silver and Black.

Available sizes: 5, 10, 15, 20, 25, 30, 35, 40, 45, 50, 55, 60 g

Packaging units: 5 - 30 grams, 100 pieces/box
35 - 60 grams, 50 pieces/box

Part numbers: Silver 5161-OXX0-001
Black 5161-OXX3-001



TYPE 162

This type of weight is designed especially for French rims. Suitable to FIAT as well.

Available sizes: 5, 10, 15, 20, 25, 30, 35, 40, 45, 50, 55, 60 g

Packaging units: 5 - 30 grams, 100 pieces/box
35 - 60 grams, 50 pieces/box

Part number: 5162-OXX0-001

TYPE 164

Original part of: MERCEDES-BENZ Sprinter
This weight is suitable for French steel rims as well as for light truck steel rims (with a wider flange), e. g. FORD Transit until 2013 and VW Crafter.

Available sizes: 5, 10, 15, 20, 25, 30, 35, 40, 45, 50, 55, 60, 65, 70, 75, 80, 85, 90 g

Packaging units: 5 - 30 grams, 100 pieces/box
35 - 60 grams, 50 pieces/box
65 - 90 grams, 25 pieces/box

Part number: 5164-OXX0-001



TYPE 168

Original part of: OPEL
Suitable for 13 and 14 inch rims, where the application of the weight type 160 is difficult. These weights are provided with a wider clip and a smaller weight radius.

Available sizes: 5, 10, 15, 20, 25, 30, 35, 40, 45, 50, 55, 60 g

Packaging units: 5 - 30 grams, 100 pieces/box
35 - 60 grams, 50 pieces/box

Part number: 5168-OXX0-001



TYPE 187

Original part of: FORD Transit and FORD Transit Custom since 05/2014
For use on the newer steel wheels of FORD vans.

Available sizes: 10, 15, 20, 25, 30, 35, 40, 45, 50, 55, 60 g

Packaging units: 10 - 30 grams, 100 pieces/box
35 - 60 grams, 50 pieces/box

Part number: 5187-OXX0-001



TYPE 189

Original part from: FIAT Ducato
For use on the specially shaped steel rims of FIAT vans.

Available sizes: 5, 10, 15, 20, 25, 30, 35, 40, 45, 50, 60, 70, 80, 90 g

Packaging units: 5 - 30 grams, 100 pieces/box
35 - 60 grams, 50 pieces/box
70 - 90 grams, 25 pieces/box

Part number: 5189-OXX0-001



NOTE All weights on this double page conform to European Directive 2000/53/EG on end-of-life vehicles and may, therefore, be used on all vehicles within the scope of this Directive.

KNOCK-ON WEIGHTS FOR ALUMINIUM RIMS



TYPE 660

Original part of: OPEL
This universal weight is ideally suited for all European aluminium rims.

Available sizes: 5, 10, 15, 20, 25, 30, 35, 40, 45, 50, 55, 60 g

Packaging units: 5 - 30 grams, 100 pieces/box
35 - 60 grams, 50 pieces/box

Part number: 5660-OXX0-001



TYPE 661

This type suits Japanese products.

Available sizes: 5, 10, 15, 20, 25, 30, 35, 40, 45, 50, 55, 60 g

Packaging units: 5 - 30 grams, 100 pieces/box
35 - 60 grams, 50 pieces/box

Part number: 5661-OXX0-001

TYPE 664

Especially developed for aluminium rims used by French manufacturers (J rim flange). Particularly suitable for RENAULT, CITROËN and PEUGEOT.

Available sizes: 5, 10, 15, 20, 25, 30, 35, 40, 45, 50, 55, 60 g

Packaging units: 5 - 30 grams, 100 pieces/box
35 - 60 grams, 50 pieces/box

Part number: 5664-OXX0-001



TYPE 666

Original part of: FORD
The clip is shorter than the one of the weight type 660 and therefore particularly suitable for rims with low sealing zone.

Available sizes: 5, 10, 15, 20, 25, 30, 35, 40, 45, 50, 55, 60 g

Packaging units: 5 - 30 grams, 100 pieces/box
35 - 60 grams, 50 pieces/box

Part number: 5666-OXX0-001



NOTE All weights on this double page conform to European Directive 2000/53/EG on end-of-life vehicles and may, therefore, be used on all vehicles within the scope of this Directive.

LEAD KNOCK-ON WEIGHTS

NOTE These weights on this page do **NOT** comply with the EU end-of-life vehicles Directive 2000/53/EC and therefore, according to the EU Directive, must not be applied to M1 and N1 class vehicles.



TYPE 101

Uncoated universal weight for steel rims.

Available sizes: 5, 10, 15, 20, 25, 30, 35, 40, 45, 50, 55, 60 g

Packaging units: 5 - 40 grams, 100 pieces/box
45 - 60 grams, 50 pieces/box

Part number: 5101-OXX0-001



TYPE 610

Uncoated universal weight for aluminium rims with standard rim flange. The short clip prevents air loss on rims with a low sealing area.

Available sizes: 5, 10, 15, 20, 25, 30, 35, 40, 45, 50, 55, 60 g

Packaging units: 5 - 40 grams, 100 pieces/box
45 - 60 grams, 50 pieces/box

Part number: 5610-OXX0-001

PASSENGER CAR SAFETY WEIGHTS



THE WEIGHT FOR PROFESSIONAL USE

Safety weights, or also called 2-piece weights, used in an OEM context, can also be installed professionally by specialist tire traders at any time using HOFMANN POWER WEIGHT weights and the appropriate tools. All you need for this is the tire compression tool or a pneumatic tire compression tool as well as the clip fitting tool. To install these weights without any problems and without damaging the rim, simply follow the steps below.

INSTALLATION OF SAFETY WEIGHTS



INSERT THE CLIP

Use the tire compression tool or a pneumatic tire compression tool to squeeze the tire off gently to the point where the weight is going to be installed, just far enough in order for the rim flange to be exposed.

Attach the clip on the required point.

Remove the tire compression tool. The clip will be pressed between the rim flange and the tire, where it will remain secure.



MOUNT THE WEIGHT

Use the clip fitting tool to lift the clip so that you can push the coated weight body underneath it.

Push the weight of the right grammature under the clip.

Gradually tilt the clip fitting tool back, so that the clip is able to engage in the recess provided in the weight body.

SAFETY WEIGHTS

NOTE Safety weights are supplied without clips. Clips have to be ordered additionally depending on the planned purpose of use.

TYPE 260 WITH SEPARATE CLIP



Original part of: VOLKSWAGEN
Also suitable, if platforms of the same design are used at foreign plants of the manufacturers (e. g. SKODA, SEAT). The weight sizes 5 and 10 grams of the weight type 260 are made of polypropylene (PP). Our special tools clip fitting tool and tire compression tool are required for the correct application of the weights to the rims.

The following combinations should be considered:

Weight type 260 combined with clip V3-Zn

Available sizes: 5, 10, 15, 20, 25, 30, 35, 40, 45, 50, 55, 60 g

Packaging units: 5 - 30 grams, 100 pieces/box
35 - 60 grams, 50 pieces/box

Part number:
weight: 5260-OXX0-001
clip: V3-Zn 5812-0271-302

TYPE 261 WITH SEPARATE CLIP



Original part of: MERCEDES-BENZ
The weight sizes 5 and 10 grams are made of polypropylene (PP). Our special tools clip fitting tool and tire compression tool are required for the application of the weights on the rim. It has to be considered that MERCEDES-BENZ has not approved safety weights for all aluminium rims. If adhesive weights are specified, the weight type 360 has to be applied.

The following combinations should be considered:

Steel rims:

Weight type 261 combined with clip M1-Zn

Aluminium rims:

Weight type 261 combined with clip MA-Zn

Available sizes: 5, 10, 15, 20, 25, 30, 35, 40, 45, 50, 55, 60 g

Packaging units: 5 - 30 grams, 100 pieces/box
35 - 60 grams, 50 pieces/box

Part number:
weight: 5261-OXX0-001
clip: M1-Zn (Black) 5812-0191-502
MA-Zn 5812-0201-302

TYPE 274 WITH SEPARATE CLIP



Original part of: BMW, MINI
The weight sizes 5 and 10 grams are made of polypropylene (PP). Our special tools clip fitting tool and tire compression tool are required for the application of the weights on the rim.

It has to be considered that BMW has approved safety weights only for specific aluminium rim models. All other aluminium rims have to be provided with the adhesive weight type 390.

The following combinations should be considered:

Steel rims:

Weight type 274 combined with clip B1

Aluminium rims:

Weight type 274 combined with clip B3

Available sizes: 5, 10, 15, 20, 25, 30, 35, 40, 45, 50, 55, 60 g

Packaging units: 5 - 30 grams, 100 pieces/box
35 - 60 grams, 50 pieces/box

Part number:
weight: 5274-OXX0-001
clip: B1 5812-7420-101
B3 5812-7410-301

TYPE 280 WITH SEPARATE CLIP



Original part of: VW NUTZFAHRZEUGE, VOLVO
The weight size 5 grams are made of polypropylene. Weight type 280 is applied in conjunction with the clip V3-Zn. Our special tools clip fitting tool and tire compression tool are required for the application of the weights on the rim.

The following combinations should be considered:

Standard:

Weight type 280 combined with clip V3-Zn

VOLVO-Aluminium rims:

Weight type 280 combined with clip B3

Available sizes: 5, 10, 15, 20, 25, 30, 35, 40, 45, 50, 55, 60 g

Packaging units: 5 - 30 grams, 100 pieces/box
35 - 60 grams, 50 pieces/box

Part number:
weight: 5280-OXX0-001
clip: V3-Zn 5812-0271-302
B3 5812-7410-301

NOTE All weights on this double page conform to European Directive 2000/53/EG on end-of-life vehicles and may, therefore, be used on all vehicles within the scope of this Directive.

PASSENGER CAR ADHESIVE WEIGHTS

INSTALLATION OF ADHESIVE WEIGHTS



PRE-TREATING OF THE RIM

Clean the rim thoroughly with a cleaning agent that is compatible with varnish (e.g. IPA 70 %) in order to remove any residual grease, silicone or adhesive.

PLEASE NOTE:

The temperature of rim and surrounding area should be at least 15 °C. The adhesive surface must be dry and completely free of grease and dust.



PRE-BENDING OF THE WEIGHTS

Separate the correct gramage (as calculated) from the bar. Mould the shape of the weight to match the rim radius (with protective film).

PLEASE NOTE:

You need to bend the weights gradually and gently, otherwise they will break apart at the joins. You should bend the weight slightly smaller than the rim's radius.



REMOVAL OF THE PROTECTIVE FILM

Remove the protective film.

PLEASE NOTE:

Do not touch the glued surface after peeling off the film.



STICKING THE WEIGHT ON

Attach the weight centrally on the calculated position, making sure that the weight is parallel to the edge of the rim.



PLEASE NOTE:

Press the weight from the center to the outer ends. A minimum pressure of 100 kPa is required.

The angle of the glued rim surface should not exceed 15° to the horizontal.

OEM-ADHESIVE WEIGHTS FOR ALUMINIUM RIMS



TYPE 360

Original part of: ASTON MARTIN, AUDI, MERCEDES-BENZ, CHRYSLER, LAND ROVER

The weights have a height of 5.8 mm (incl. tape) and a width of 15 mm. Weights from 20 grams are provided with a single groove; weights from 35 grams and are provided with two grooves; from 50 grams are provided with three grooves; from 65 grams with four grooves. This facilitates moulding to the rim radius. Segments are connected with two narrow steps, for easier and faster mounting. For vehicles, where there is no sufficient clearance in the brake caliper area, please use our weight type 361.

Available sizes: 5, 10, 15, 20, 25, 30, 35, 40, 45, 50, 55, 60, 65, 70, 75 g

Packaging units: 5 - 30 grams, 100 pieces/box
35 - 75 grams, 50 pieces/box

Part number: 5360-OXX0-201



TYPE 361

Original part of: PORSCHE, VOLKSWAGEN, VOLVO, FORD, OPEL
The weights have a height of 3.8 mm (incl. tape). The width of the weights is 15 mm for 5 to 10 grams and 19 mm for all higher grammages. Weights from 10 grams are provided with a single groove; weights from 30 grams are provided with two grooves; from 40 grams with three grooves; from 55 grams with four grooves. This facilitates moulding to the rim radius.

Available sizes: 5, 10, 15, 20, 25, 30, 35, 40, 45, 50, 55, 60 g

Packaging units: 5 - 30 grams, 100 pieces/box
35 - 60 grams, 50 pieces/box

Part number: Silver 5361-OXX0-201
Black 5361-OXX3-201

TYPE 390

Original part of: BMW, MINI

The weights have a total height of 6.2 mm including adhesive tape and a width of 15 mm. Weights from 25 grams are provided with a single groove; weights from 35 grams and are provided with two grooves; from 50 grams with three grooves; This facilitates moulding to the rim radius. For vehicles, where there is no sufficient clearance in the brake caliper area, please use our weight type 361.

Available sizes: 5, 10, 15, 20, 25, 30, 35, 40, 45, 50, 55, 60 g

Packaging units: 5 - 30 grams, 100 pieces/box
35 - 60 grams, 50 pieces/box

Part number: 5390-OXX0-201

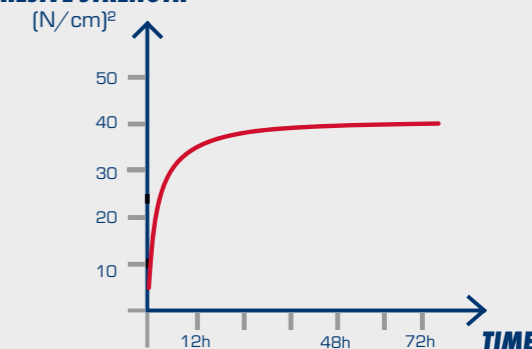


ORIGINAL OEM TAPE

By following our instructions for adhesive tapes, you can ensure the best long-term durability possible. HOFMANN POWER WEIGHT adhesive weights are compatible with all the various types of rim available on the market. They even offer maximum adhesion when used on finished surfaces, such as those with a plastic or chromium coating.

- Various backing material thicknesses
- Temperature resistance at continuous load from -40 °C to +100 °C, as well as for short-term radiant heat up to +230 °C.
- 90 % of final adhesive strength is achieved after 24 hours (depending on influence of temperature)
- Overlapping protective film for easier handling available for selected products
- Weight can be moved immediately following adhesion and with careful handling

ADHESIVE STRENGTH



24 h after installation, 90 % of the final adhesive strength is achieved. The final adhesive strength is achieved after 72 h.

NOTE All weights on this double page conform to European Directive 2000/53/EG on end-of-life vehicles and may, therefore, be used on all vehicles within the scope of this Directive.

ADHESIVE ROLLS FOR ALUMINIUM RIMS



TYP 355

Endless adhesive weights roll with 1,000 galvanized and coated steel segments of 5 grams each. The cardboard box is equipped with a special „anti-roll-back“ function, which prevents the end of the adhesive weights roll from slipping back into the box.

Total weight:	5 kg	
Packaging unit:	1 roll/box	
Part numbers:	Silver	5355-0050-739
	Titanium grey	5355-0054-739
	Black	5355-0058-739



TYP 375

Optimized segment design: Combines the advantages of both previous zinc adhesive weight rolls type 356 & 357. Corrosion resistant zinc & optimal segment height. Universal use: Universal use 5 kg zinc adhesive weight roller with 5 g segmentation for aftermarket. High adhesive strength: High adhesive strength at OE level with residue-free removability at the same time. Total height incl. adhesive tape 3.8 mm, width 19 mm.

Total weight:	5 kg	
Packaging unit:	1 roll/box	
Part numbers:	Silver	5375-0050-739
	Black	5375-0053-739E



TYP 358

OEM adhesive weight roll (VW, Porsche) for alloy wheels in Silver and Black with magnetic anti-roll back function.

Original part of: AUDI, FORD, PORSCHE, VOLKSWAGEN & VOLVO. The weights have a total height of 4 mm including adhesive tape and a width of 19 mm.

Total weight:	5 kg	
Packaging unit:	1 roll/box	
Part numbers:	Silver	5358-0020-736
	Black	5358-0023-736



TYP 359

OEM adhesive weight roll (Audi & BMW) for aluminium rim in Silver and Black with magnetic anti-roll back function.

Original part of: BMW, MERCEDES-BENZ & Mini. The weights have a total height of 5.6 mm including adhesive tape and a width of 15 mm.

Total weight:	5 kg	
Packaging unit:	1 roll/box	
Part numbers:	Silver	5359-0027-736
	Black	5359-0028-736

NOTE All weights on this double page conform to European Directive 2000/53/EG on end-of-life vehicles and may, therefore, be used on all vehicles within the scope of this Directive.

SPEEDCUT®



CLICK ME

VIDEO-TUTORIAL 2 "SPEEDCUT®"

For professional use in the workshop, the engineers of HOFMANN POWER WEIGHT have developed the SPEEDCUT®, a roll holder for professionals. You will get all important information about the SPEEDCUT® in this video.



CLICK ME

VIDEO-TUTORIAL 3 "SPEEDCUT® ASSEMBLY INSTRUCTIONS"

In this video you will learn how to assemble the SPEEDCUT® quickly and easily.

FROM PROFESSIONALS – FOR PROFESSIONALS

WORKSHOP OPTIMISED SYSTEM FOR ADHESIVE WEIGHTS WITH OUR INNOVATIVE CUTTING DEVICE.

The multifunctional adhesive rolls guarantee simple storage, since a roll always provides the suitable weight. Additionally, all rolls are equipped with the SPEEDLINER® tape that can be removed without leaving any residue. The engineers of HOFMANN POWER WEIGHT also developed the SPEEDCUT®, a roll-holder for professional use. The box of the roll and the SPEEDCUT® match perfectly to each other for best work results.

■ easy ■ fast ■ safe

SPEEDCUT®

Roll-holder for all HOFMANN POWER WEIGHT adhesive rolls with integrated weight scale and innovative cutting device. The SPEEDCUT® is developed especially for HOFMANN POWER WEIGHT rolls and provides quick and safe handling. The rollholder can be mounted multifunctionally on the balancing machine or on the wall. The matching floor stand offers even more flexible placement. Floor stand and rolls are available separately.

Content:	1 x SPEEDCUT®
Part number:	0401-0023-150

WASTE BIN - SPEED-CUT

Part number:	0401-0023-153
---------------------	---------------

ADHESIVE WEIGHT

Typ 358 / 359
Order via mail to cseu@wegmann-automotive.com

FLOOR STAND WITH ACCESSORIES

Floor stand for flexible attachment of up to two SPEEDCUT® cutting systems. The multifunctional wall mount with holes and hooks offers a useful storage of tools. The scrap metal bin and the protective film waste bin are also effective helpers to make work easier.

Storage option for max. 4 rolls.

Content:	1 x floor plate incl. 4 screws
	1 x stand incl. 4 screws for SPEEDCUT®
	5 x hooks for the wall with holes
	1 x waste bin for weights
	1 x waste bin for protective film

Part number:	0401-0023-181
---------------------	---------------



SPEEDCUT® with floor stand including accessories





REPLACEMENT BLADE

Blade for SPEEDCUT® in a rack with feeding assistance, easy exchange.

Content: 1 x replacement blade

Part number: 0401-0023-152



WASTE BIN FOR PROTECTIVE FILM

Waste bin for protective film that can be hung directly on the SPEEDCUT® for easy disposal of the removed protective film.

Content: 1 x waste bin for protective film

Part number: 0401-0023-154



INLAY TRAY FOR 4 ROLLS

Inlay tray for SPEEDCUT® floor stands. The inlay tray offers a convenient storage directly at the working station for up to 4 HOFMANN POWER WEIGHT rolls.

Content: 1 x inlay tray for 4 rolls

Part number: 0401-0023-182



SPEEDCUT MAGNET

Magnet for mounting behind the weight scale of the SPEEDCUT® roll holder. Prevents the adhesive weight roll from rolling back into the box. Easy to mount.

Content: 1 x Magnet

Part number: for type 355 0401-0023-156

for type 358 & 359 0401-0023-157

TYPE 363

Original part of: KTM, Triumph

The adhesive tape is individually separable and divided in 3 x 10 grams and 3 x 5 grams segments. The alternative to the single-piece weight type 360. The segments are separable without tools. Also available as high-gloss chrome-plated version Type 367. Total height including adhesive tape: 6.1 mm. Width: 15 mm.

Available size: 45 g

Packaging unit: 100 pieces/box

Part numbers: Silver 5363-0450-701
Black 5363-0453-701
Chrome [Type 367] 5367-0450-701



TYPE 365

The adhesive strip is individually separable and divided in 7 x 5 grams segments. Total height including adhesive tape: 3.8 mm. Width: 19 mm.

Available size: 35 g

Packaging unit: 100 pieces/box

Part number: 5365-0350-701



TYPE 369

Extra slim adhesive weight. Especially for the application on vehicles, where there is little space between the brake caliper and the rim. 30 grams adhesive weight, divided in 4 x 5 grams and 4 x 2.5 grams segments. Total height including adhesive tape: 2.8 mm. Width: 19 mm. Length: 115 mm.

Available size: 30 g

Packaging unit: 100 pieces/box

Part number: 5369-0300-701



ULTRA FLAT



NOTE All weights on this page conform to European Directive 2000/53/EG on end-of-life vehicles and may, therefore, be used on all vehicles within the scope of this Directive.

ADHESIVE WEIGHTS FOR ALUMINIUM RIMS

TYPE 380

The ideal adhesive weight for the garage, divided in 12 x 5 grams segments. Total height including adhesive tape: 3.8 mm. Width: 19 mm.

Available size:	60 g	
Packaging unit:	50 pieces/box	
Part numbers:	Silver	5380-0600-701
	Black	5380-0603-701



TYPE 548

Bar made from 25 mm wide 10 g segments. Ideal for use on alloy rims of SUVs, heavy cars and vans where the mass of a standard weight is not sufficient. The length of the bar is comparable to that of a standard 60 g bar at twice the weight. Height 6 mm.

Available size:	120 g	
Packaging unit:	50 pieces/box	
Part numbers:	Silver	5548-1200-401
	Black	5548-1203-401



SPEEDLINER®-TECHNOLOGY

REMOVABLE WITHOUT LEAVING TRACES

The adhesive tape has a 5-layer structure; a special intermediate reinforcement film with exceptional tear-resistant properties ensures strong cohesion within the adhesive tape. Thanks to this long-lasting bond structure, removing the adhesive weight tape is much easier: Any foam residue sticks to the reinforcement film and the adhesive weight can thus be lifted without leaving any traces behind. Time-consuming rinsing with scrapers or aggressive, toxic agents is a thing of the past. As a result, fitters will save both time and money – and vehicle owners will be delighted with a solution that is gentle on rims.

HIGHER INITIAL TACK

The adhesive has been optimised specifically in line with HOFMANN POWER WEIGHT's specifications and not only features higher initial tack, but also achieves maximum final adhesive strength – even faster than before. This means that the adhesive weight is guaranteed to stay in place, even on rims that have not been perfectly cleaned beforehand. The balancing position can still be corrected immediately, thanks to the innovative bond structure, meaning that cost and time consuming readjustment work is no longer an issue.

CLEAN TEARING EDGES

The optimised SPEEDLINER® foam is perforated on each adhesive bar for passenger cars. Thus it now can be torn even more easily than before without the use of any tools, leaving a clean tearing edge when individual segments are separated. Combined with the grid web technology used in the HPW adhesive weights and the perforated liner, this feature makes fitting work considerably simpler.

EASY LINER REMOVAL

Stronger material has been used to create the new protective film (known as the liner). This makes it easier to grip the liner, making it easier and faster for the fitter to pull it off.



CLICK ME

VIDEO-TUTORIAL 4 "SPEEDLINER®"

All HOFMANN POWER WEIGHT adhesive bars feature a perforated adhesive tape with innovative SPEEDLINER® technology. In this video you can learn more about the special adhesive tape.



UNTIL NOW:
Residue remains on the rim.



NEW:
Easy and clean removing means 50% less time.

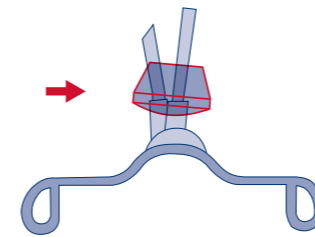
NOTE All weights on this page conform to European Directive 2000/53/EG on end-of-life vehicles and may, therefore, be used on all vehicles within the scope of this Directive.

MOTORCYCLE WEIGHTS



INSTALLATION OF MOTORCYCLE WEIGHTS

COMPENSATING STATIC IMBALANCE WITH SPOKE WEIGHTS



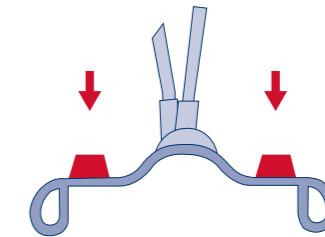
HOFMANN POWER WEIGHT balancing weights are used, depending on the spoke nipple diameter. The weight is fastened to the spoke nipple in the centre of the rim.

BALANCING SPOKE WHEELS



The clip weights for spoked wheels are attached to the spoke nipple, using HOFMANN POWER WEIGHT impact tool no. 385/1. This is the only way to avoid installation errors, as the HOFMANN POWER WEIGHT tool transfers the force necessary for ensuring that the weight is clamped securely and precisely. An assembly with other tools or the use of weights, which are compressed only with pliers, can cause the weights to detach during driving.

COMPENSATING DYNAMIC IMBALANCE WITH ADHESIVE WEIGHTS



Dynamic imbalance is frequently also referred to as an imbalance in two levels. The adhesive weights from the HOFMANN POWER WEIGHT range are ideal for compensating this kind of imbalance. These weights can be stuck onto the narrow rim shoulder, on the right and left sides of the spokes, provided that the glued surfaces are within the permissible inclination angle of 15°. If the glued surfaces exceed an inclination angle > 15°, there is a risk of the adhesive weight to lose its ability to adhere due to the centrifugal forces involved.

NOTE The installing instruction for adhesive weights can be found on page 29.

SPOKE WEIGHTS FOR ALUMINIUM RIMS

TYPE 711

Bore diameter 6.2 mm, for spoke nipples Ø 6.4 mm according to DIN 74 371.

Available sizes: 5, 10, 15, 20 g

Packaging unit: 25 pieces/box

Part number: 5711-OXX0-001



TYPE 712

Bore diameter 5.5 mm, for spoke nipples Ø 6.0 mm according to DIN 74 371.

Available sizes: 5, 10, 15, 20 g

Packaging unit: 25 pieces/box

Part number: 5712-OXX0-001



TYPE 713

Bore diameter 5.5 and 6.2 mm, for spoke nipples Ø 6.0 and 6.4 mm according to DIN 74 371.

Available sizes: 10, 15, 20 g

Packaging unit: 25 pieces/box

Part number: 5713-OXX0-001



TYPE 717

Bore diameter 6.8 mm, for spoke nipples Ø 7.0 to 7.2 mm according to DIN 74 371.

Available sizes: 5, 10, 15, 20 g

Packaging unit: 25 pieces/box

Part number: 5717-OXX0-001



ADHESIVE WEIGHTS FOR MOTORCYCLE RIMS

TYPE 706

40 grams adhesive weight, divided in 8 x 5 grams segments. Total height including adhesive tape: 4,8 mm. Width: 10 mm.

Available size: 40 g

Packaging unit: 50 pieces/box

Part numbers:

uncoated	5706-0400-701
chrome	5706-0404-701
black	5706-0403-701
orange	5706-0408-701
green	5706-0409-701



TYPE 715

50 grams adhesive weight with alternating segmentation for detailed balancing. Equipped with the SPEEDLINER® adhesive tape. With a height of 7 mm including the adhesive tape and a width of 11 mm, the perfect allrounder in the field of adhesive weights for motorcycles.

Available size: 50 g (7 x 5 g + 6 x 2,5 g)

Packaging unit: 25 pieces/box

Part numbers:

uncoated	5715-0500-701
chrome	5715-0504-701
black	5715-0503-701



TYPE 799

Original part of: BMW, TRIUMPH

The weights have a total height of 7.2 mm including tape and a width of 11 mm. Weights from 20 grams are provided with a single groove.

Available sizes: 5, 10, 15, 20, 25, 30 g

Packaging unit: 25 pieces/box

Part number: 5799-OXX0-201



TYPE 380

The ideal adhesive weight for the workshop divided in 12 x 5 grams segments. Total height including adhesive tape: 3.8 mm. Width: 19 mm.

Available size: 60 g

Packaging unit: 50 pieces/box

Part numbers:

Silver	5380-0600-701
black	5380-0603-701



ADHESIVE WEIGHTS FOR MOTORCYCLE RIMS



TYPE 303

60 grams adhesive weight, divided in 4 x 5 grams and 4 x 10 grams segments. Total height including adhesive tape: 5.0 mm. Width: 15 mm.

Available size: 60 g
Packaging units: 100 pieces/box
alternative: 50 pieces/box

Part number: 5330-0605-701



TYPE 330

60 grams adhesive weight, divided in 4 x 5 grams and 4 x 10 grams segments. Total height approx. 3.8 mm, width 18 mm. It can be applied to vehicles, where there is little space between the rim and the brake.

Available size: 60 g
Packaging units: 100 pieces/box
alternative: 50 pieces/box

Part number: 5330-0605-701

TRUCK WEIGHTS



KNOCK-ON WEIGHTS FOR TRUCK RIMS



TYPE 164

Original part of: MERCEDES-BENZ Sprinter
Zinc knock-on weight with premium powder-coated surface in Silver. The weight complies with the EU directive 2000/53/EG.

Available sizes: 5, 10, 15, 20, 25, 30, 35, 40, 45, 50, 55, 60, 65, 70, 75, 80, 85, 90 g

Packaging units: 5 - 30 Grams, 100 pieces/box
35 - 60 Grams, 50 pieces/box
65 - 90 Grams, 25 pieces/box

Part number: 5164-OXX0-001



TYPE 187

Original part of: FORD Transit and FORD Transit Custom since 05/2014
For using on the newer steel rims of FORD vans.

Available sizes: 10, 15, 20, 25, 30, 35, 40, 45, 50, 55, 60 g

Packaging units: 10 - 30 Grams, 100 pieces/box
30 - 60 Grams, 50 pieces/box

Part number: 5187-OXX0-001



TYPE 189

Original part of: FIAT Ducato
For use on the specially shaped steel rims of FIAT vans.

Available sizes: 5, 10, 15, 20, 25, 30, 35, 40, 45, 50, 60, 70, 80, 90 g

Packaging units: 5 - 30 Grams, 100 pieces/box
35 - 60 Grams, 50 pieces/box
70 - 90 Grams, 25 pieces/box

Part number: 5189-OXX0-001



TYPE 525

Balancing weight for trucks with tubed tires.

Available sizes: 50, 75, 100, 150, 200, 250, 300, 350, 400 g

Packaging unit: 10 pieces/box

Part number: 5525-XXX0-007

TYPE 527

Original part of: MERCEDES-BENZ, VOLVO, MAN
Balancing weight for tubeless truck tires. Suitable for rim sizes from 17.50 to 22.50 inches.

Available sizes: 50, 75, 100, 150, 200, 250, 300 g

Packaging unit: 10 pieces/box

Part number: 5527-XXX0-007



TYPE 529

Original part of: MERCEDES-BENZ
Balancing weight for tubeless truck tires from 22,5 inches. With tight clip distance for the use on weight optimized steel rims with thin rim flange of 4,5 to max. 6,5 mm. The weights are furnished with a premium powder-coated surface in Silver.

Available sizes: 50, 75, 100, 150, 200, 250, 300, 350, 400 g

Packaging unit: 10 pieces/box

Part number: 5529-XXX0-307



TYPE 530

Original part of: MERCEDES-BENZ, SCANIA, VOLVO, EVOBUS, MAN
Balancing weight for tubeless truck tires. Suitable for rim sizes from 22.50 to 26.50 inches with a rim flange thickness of 6 mm or more.

Available sizes: 25, 50, 75, 100, 150, 200, 250, 300, 350, 400 g

Packaging unit: 10 pieces/box

Part number: 5530-XXX0-007



ADHESIVE WEIGHTS FOR TRUCK ALUMINIUM RIMS



TYPE 510

Adhesive weight bar with 4 segments weighing each 25 grams. With a height of only 6 mm incl. adhesive tape and with a width of 19 mm also usable for narrow installation spaces on truck rims.

Available size: 100 g

Packaging unit: 10 pieces/box

Part number: 5510-1000-207



TYPE 511

The heavy weight among the adhesive bars. With 4 x 50 grams segments for compact placement of weight. Height 9 mm, width 25 mm.

Available size: 200 g

Packaging unit: 10 pieces/box

Part number: 5511-2000-207



TYPE 551

Original part of: VOLVO, EVOBUS, MERCEDES-BENZ, RENAULT, MAN, SCANIA Adhesive weight for truck aluminium rims. The weight body has a premium powder-coating in Silver. The adhesive tape is provided with a pull-off tag for easier handling.

Available sizes: 50, 75, 100, 125, 150, 175, 200, 225, 250, 300 g

Packaging unit: 10 pieces/box

Part number: 5551-XXX0-501



TYPE 550

100 grams adhesive weight, divided in 5 x 20 grams segments. Width 15 mm, length 105 mm, total height 7 mm. The adhesive tape is provided with a pull-off tag for easier handling.

Available size: 100 g

Packaging unit: 10 pieces/box

Part number: 5550-1000-507



BALANCING COMPOUND

QUICK AND EASY BALANCING

No balancer required, to apply the compound: just tear the bag open and apply it in the wheel.

TPMS SAFE

Specially coated compound has no adverse effects on TPMS sensors or on the inside of the tire. The high quality metal valve cap and the special core protect your valve.

PROLONGED TIRE LIFE

Less vibration and smooth rolling results in longer tire life and lower tire wear.

ENVIRONMENTALLY FRIENDLY

Balancing compound is the lead-free, cost-effective solution of balancing. Likewise, dozens of weights can be saved, since no re-balancing is necessary.

MORE DRIVING COMFORT

Vibration dampening increases comfort and lets the driver arrive relaxed at his destination.

DRIVE LONGER. DRIVE SMARTER.

BALANCING COMPOUND WITH ADVANCED FUSION TECHNOLOGY.



VIDEO-TUTORIAL 1 "BALANCING COMPOUND"

Balancing is important – for truck tires, too. And with HOFMANN POWER WEIGHT balancing compound, this is now easier than ever! Watch the video to find out how it works.

CLICK ME

HOW DOES IT WORK?

The balancing compound is initially distributed evenly on the inner wall of the tire during the ride. The reason for this is the centrifugal force. If the wheel is unbalanced, the centrifugal force of the heavy spot increases as the speed increases, causing the wheel to wobble and jump. Due to the flexible positioning of the balancing compound an optimum balance can be achieved without any further effort, even if the unbalance changes. Simply fill the required amount of balancing compound into the unmounted tire, attach the special valve insert and valve cap, and mount the wheel on the truck.

On the WEGMANN automotive website you will also find further information on the subject and, among other things, informative and helpful videos on the function and application of balancing compound.



APPLICATION „BALANCING COMPOUND"

On the WEGMANN automotive website you will also find further information on the subject and, among other things, informative and helpful videos on the function and application of balancing compound.

CLICK ME

FUSION TECHNOLOGY™ – THE INTELLIGENT BALANCING COMPOUND:

The secret of the innovative FUSION TECHNOLOGY lies in the different size of the balancing material. The larger red kernels concentrate in the center of the tire and dampen the static imbalance. The smaller blue kernels are moving to the outside of the tire and compensate the wobbling of the wheel which is caused by dynamic imbalance. The result is a smooth ride for the entire life of the tire.

*Laboratory tested against international tire safety standards.

Red kernels aid the static imbalance.

Blue kernels aid the dynamic imbalance.



TYPE 505 BALANCING COMPOUND

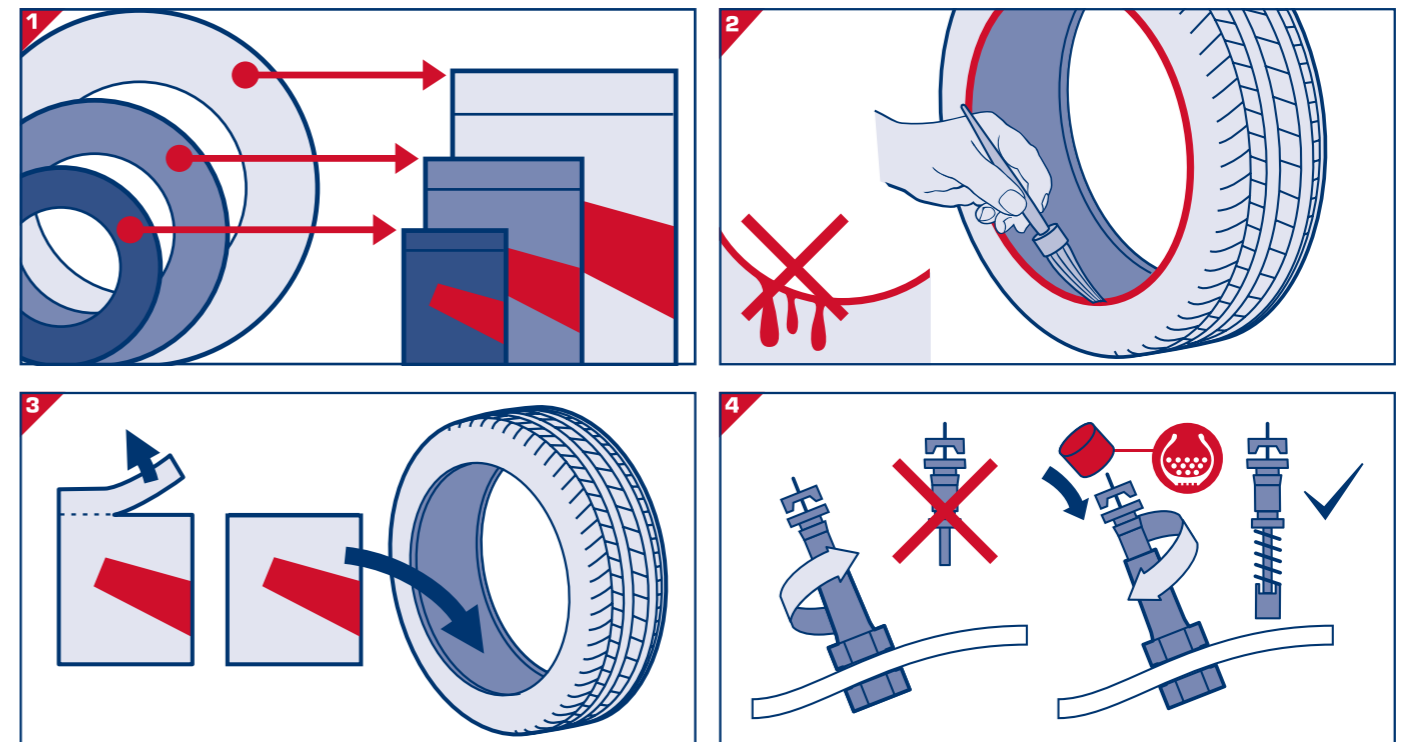
As the market leader in wheel balancing products, we are proud to offer a premium solution for in-tire balancing. With careful selection of materials, the balancing powder type 505 was developed for maximum performance and tested for maximum safety in intensive laboratory and field tests. The innovative FUSION TECHNOLOGY of the balancing bodies ensures optimum balancing results.

Only suitable for applications up to 100 km/h and medium & heavy trucks.



SIZE	WEIGHT	QTY	PART NUMBER
XS	4 oz/ 120 g	16 bags	0401-5505-120
S	6 oz/ 180 g	16 bags	0401-5505-180
M	8 oz/ 230 g	12 bags	0401-5505-230
L	10 oz/ 290 g	8 bags	0401-5505-290
XL	12 oz/ 350 g	8 bags	0401-5505-350

ASSEMBLY INSTRUCTIONS TYPE 505:



UNSER SERVICE:

Application chart

Available for download to find the right size for every tire at www.hofmann-powerweight.com



Application chart „BALANCING Compound" TYPE 504 and TYPE 505

No more complicated weighing of balancing powder! Download the application chart here and easily find the right dosage.

CLICK ME

Self-explanatory assembly instructions

Easy to follow step-by-step explanation on the bag

High-quality accessories for a proper installation

Valve core and marked metal valve cap included in every bag

Workshop-optimized storage box

Small packaging units with a convenient opening for efficient storage in the workshop.



BALANCING COMPOUND



SPECIAL TOOLS & PASTES

BALANCING COMPOUND TYPE 504, 8 KG

The standard solution: The balancing compound Type 504 in a bucket (measuring spoon included in delivery) ensures static smooth running optimisation in commercial vehicles. The required filling quantity is shown in a list printed on the side of the bucket.

Only suitable for applications up to 100 km/h and medium and heavy trucks.

Content: 8 kg

Packaging unit: 1 piece

Part number: 0401-5504-800

BALANCING COMPOUND TYPE 504, 6 KG

The standard solution in a new design: Type 504 balancing compound is delivered in a new optimized 6kg container, which includes a measuring spoon and a reference chart for filling quantity. The balancing compound is used to compensate the static imbalance of commercial vehicles. The practical filling chart can also be hung up.

Only suitable for applications up to 100 km/h and medium and heavy trucks.

Content: 6 kg

Packaging unit: 1 piece

Part number: 0401-5504-800

VALVE CAP FOR BALANCING COMPOUND

Valve cap for identification of balancing compound inside the tire.

Packaging unit: 20 pieces

Part number: 0401-5234-001

VALVE CORE FOR BALANCING COMPOUND

The special valve core prevents the balancing material from entering the valve.

Packaging unit: 20 pieces

Part number: 0401-5234-002

MEASURING SPOON FOR BALANCING COMPOUND

Measuring spoon for measuring balancing compound inside the tire. A filling table is printed on each bucket of balancing compound Type 504.

Packaging unit: 1 piece

Part number: 0401-0025-018



SPECIAL TOOLS

Information on our knock-on aid can be found on page 19.



ADHESIVE WEIGHT PLIERS

High quality adhesive weight pliers for easy and quick removal of adhesive weights. Prevents scratching of the rim. Maximum clamping range 21 mm.

Packaging unit: 1 piece
Part number: 0401-0025-017



SCRAPER

For the easy and gentle removal of adhesive weights. High quality, robust plastics. Blade width 22.5 mm.

Packaging unit: 1 piece
Part number: 0401-0025-009



UNIVERSAL WEIGHT PLIERS

Standard tool for the fitting and removal of HOFMANN POWER WEIGHT knock-on weights.

Packaging unit: 1 piece
Part number: 0401-0001-000



SPECIAL BRUSH FOR MOUNTING PASTE

Angled special brush for the application of the tire installation paste. Brush head Ø 51.5 mm, brush handle 300 mm.

Packaging unit: 1 piece
Part number: 0401-0025-002



CLIP FITTING TOOL

Special tool for the fitting and removal of HOFMANN POWER WEIGHT balancing weights with separate clip.

Width: 15,5 mm and 19,0 mm
Packaging unit: 1 piece
Part number: 0401-0004-000



TIRE COMPRESSION TOOL

Special tool for manual removal of the tire from the rim without the need of auxiliary energy. The use of this tool allows safe and quick application of HOFMANN POWER WEIGHT safety weights with separate clip. The design and surface finish of this tool protects tires and rims.

Maximum width: 335 mm
Packaging unit: 1 piece
Part number: 0401-0002-000

INSERTION TOOL

Special tool for a safe and professional application of HOFMANN POWER WEIGHT motorcycle spoke weights type 711, 712, 713 and 717 on spoked motorcycle rims.

For safety reasons, no other tool should be used for the application of HOFMANN POWER WEIGHT motorcycle spoke weights.

Packaging unit: 1 piece
Part number: 5001-0003-000



TIRE MOUNTING PASTES

TIRE MOUNTING LIQUID

The fast drying mounting liquid prevents the appearance of white arrears on the tire walls. The lubricating property of the liquid facilitates the installation and therefore offers a saving of power and time.

Packaging unit: 1 x 5 l
Part number: 0401-0023-094



CAR TIRE MOUNTING WAX

For an easy fitting and removal of tires. After the installation the quality paste allows a secure fit of the tire to the rim. Application temperature range - 15 °C to + 50 °C.

Packaging unit: 1 x 5 kg
Part number: white 0401-0023-056
Black 0401-0023-057
Run Flat 0401-0023-093



TRUCK TIRE MOUNTING WAX

For an easy fitting and removal of tires. After the installation the quality paste allows a secure fit of the tire on the rim. Application temperature range - 15 °C to + 50 °C.

Packaging unit: 1 x 5 kg
Part number: 0401-0023-062



COMMERCIAL VEHICLE MOUNTING PASTE

Especially for the fitting and removal of large tires (tractors, construction machinery, ...). The quality paste allows a tight fit of the tire to the rim and helps to prevent cracking and aging of the rubber. Application temperature range - 30 °C to + 50 °C.

Packaging unit: 1 x 4 kg
Part number: 0401-0023-097



HANDCLEANER PASTE

Very effective hand cleaning paste for greasy hands. The biodegradable paste is very economical and gentle on the skin.

Packaging unit: 1 x 3 kg
Part number: 0401-0025-019



DISPENSER FOR HANDCLEANER PASTE

Robust dispenser for economical dosing of handcleaner paste.

Packaging unit: 1 piece
Part number: 0401-0025-021

WALL MOUNT FOR HANDCLEANER PASTE

Practical holder for space-saving application of handcleaner paste on the wall.

Packaging unit: 1 piece
Part number: 0401-0025-020

OEM-QUALITY

Only high-quality materials are used for the manufacturing of all HOFMANN POWER WEIGHT products. For example, the valves are made of EPDM rubber. This type of rubber is more resistant to critical environmental conditions such as cold, heat, ozone and other atmospheric influences.

LARGE PRODUCT RANGE

HOFMANN POWER WEIGHT offers a complete range of valves for passenger cars, light trucks, trucks, motorcycles, scooters, tractors and earthmovers.

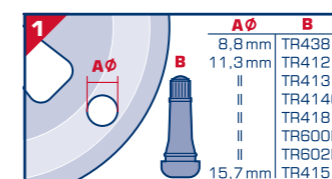
BEST SERVICE

HOFMANN POWER WEIGHT stands at any time with help and advice by the customer's side. Additionally assembly instructions and data sheets are provided to the customers.

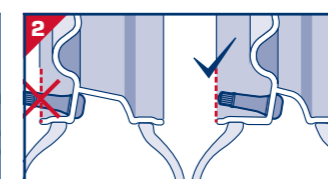
NICKEL PLATED VALVE CORE

To prevent contact corrosion a nickel plated valve core is used in all HOFMANN POWER WEIGHT valves.

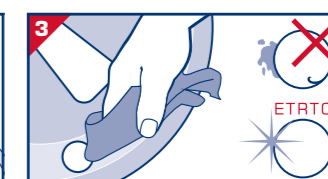
ASSEMBLY INSTRUCTIONS RUBBER VALVES:



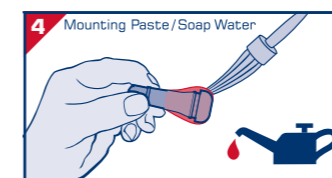
Choose the right valve, matching the dimension of the rim hole.



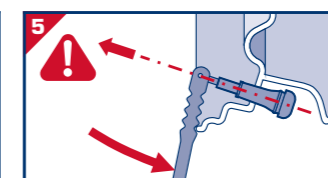
The valve stem should not be beyond of the rim flange.



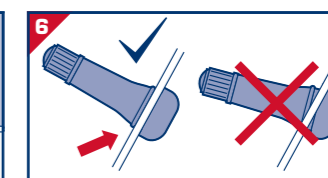
The rim hole has to be clean, free of any burrs and according to ETRTO specifications.



Lubricate the valve with soapy water or mounting paste to avoid damaging the valve.



Gently pull in the valve in a straight line, do not tilt or overstretch it.

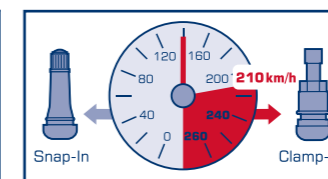


Ensure a good valve seat and inspect the valve for damages.

NOTE:



NOTE Rubber Valves can be used up to a pressure of 4,5 bar.



NOTE Maximum recommended speed when using Snap-in valves is 210 km/h. For higher speeds (Index V, W, Y, ZP) metal valves must be used for safety reasons.

SNAP-IN VALVES FOR PASSENGER CARS

RIM VALVES FOR TUBELESS TIRES OF PASSENGER CARS



ART.-NO.	TR	VERSION	ETRTO	A IN MM	Ø RIM HOLE IN MM	QTY
0401-5110-001	TR412	assembled	V2.03.6	33	11,3	100
0401-5110-004	TR412	chrome	V2.03.6	33	11,3	100
0401-5110-011	TR413	assembled	V2.03.1	42,5	11,3	100
0401-5110-012	TR413	partly assembled	V2.03.1	42,5	11,3	100
0401-5110-013	TR413	unassembled	V2.03.1	42,5	11,3	100
0401-5110-014	TR413	chrome	V2.03.1	42,5	11,3	100
0401-5110-021	TR414	assembled	V2.03.2	48,5	11,3	100
0401-5110-022	TR414	partly assembled	V2.03.2	48,5	11,3	100
0401-5110-023	TR414	unassembled	V2.03.2	48,5	11,3	100
0401-5110-024	TR414	chrome	V2.03.2	48,5	11,3	100
0401-5110-031	TR414L	assembled	V2.03.8	56,5	11,3	100
0401-5110-041	TR415	assembled	V2.03.3	42,5	15,7	100
0401-5110-051	TR418	assembled	V2.03.4	61,5	11,3	100
0401-5110-052	TR418	partly assembled	V2.03.4	61,5	11,3	100

Maximum working pressure at room temperature: 4,5 bar
At speeds above 210 km/h, use clamp-in valves. Follow the instructions of the rim manufacturer.

RIM VALVES FOR TUBELESS TIRES OF PASSENGER CARS



ART.-NO.	TR	A IN MM	Ø RIM HOLE IN MM	QTY
0401-5110-061	TR600HP	44	11,3	100
0401-5110-071	TR602HP	63	11,3	100

Maximum working pressure at room temperature: 6,9 bar

METAL VALVES FOR PASSENGER CARS

RIM VALVES FOR TUBELESS TIRES OF PASSENGER CARS AND LIGHT TRUCKS

ART.-NO.	DESCRIPTION	A IN MM	Ø RIM HOLE IN MM	QTY	MAX. PRESSURE
0401-5110-301	35MS11,3	35	11,3	100	14 bar

Installation torque: 9-14 Nm



ART.-NO.	TR	ETRTO	A IN MM	Ø RIM HOLE IN MM	QTY	MAX. PRESSURE
0401-5110-311	416S	V2.05.1	39	11,3	100	14 bar

Installation torque: 3-5 Nm



ART.-NO.	DESCRIPTION	A IN MM	Ø RIM HOLE IN MM	QTY	MAX. PRESSURE
0401-5110-312	43MS11,3	43	11,3	100	14 bar

Installation torque: 3-5 Nm



ART.-NO.	DESCRIPTION	Ø RIM HOLE IN MM	QTY	MAX. PRESSURE
0401-5111-341	Invisible valves	11,3	1 set	8 bar
0401-5211-041	Spare adapter	-	1	

Installation torque: 7-10 Nm



CLAMP-IN VALVES FOR PASSENGER CARS

RIM VALVES FOR TUBELESS TIRES OF PASSENGER CARS AND LIGHT TRUCKS



BRASS

ART.-NO.	DESCRIPTION	A IN MM	Ø RIM HOLE IN MM	QTY	MAX. PRESSURE
0401-5110-321	42MS11,3 chrome	42	11,3	100	14 bar

Installation torque: 3-5 Nm



ALUMINIUM

ART.-NO.	DESCRIPTION	A IN MM	Ø RIM HOLE IN MM	QTY	MAX. PRESSURE
0401-5110-331	42MS11,3 Silver	42	11,3	100	14 bar

Installation torque: 3-5 Nm



ART.-NO.	DESCRIPTION	A IN MM	Ø RIM HOLE IN MM	QTY	MAX. PRESSURE
0401-5114-332	42MS11,3 Black	42	11,3	20	14 bar

Installation torque: 3-5 Nm

VALVE ACCESSORIES FOR PASSENGER CARS

VALVE CAPS

ART.-NO.	DESCRIPTION	QTY
0401-5210-001	Plastic valve cap with sealing, black	100
0401-5210-002	Plastic valve cap with sealing, green	100
0401-5210-003	Plastic valve cap with sealing, blue	100
0401-5210-004	Plastic valve cap with sealing, yellow	100
0401-5210-008	Plastic valve cap with sealing, red	100
0401-5210-005	Metal valve cap with sealing	100
0401-5210-009	Metal valve cap with core screwdriver	100
0401-5210-007	Inflate through valve cap	100



VALVE CORES

ART.-NO.	TR	DESCRIPTION	QTY
0401-5210-021	TRC1	Valve core short, nickel plated	100
0401-5210-022	TRC1-L	Valve core long, nickel plated	100



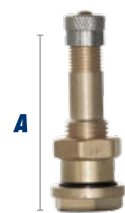
VALVE TOOLS

ART.-NO.	DESCRIPTION	QTY
0401-0023-060	Valve screwdriver, single [standard valves car+truck]	1
0401-0025-014	Valve screwdriver, single [standard valves car+truck+EM]	1
0401-0023-059	Valve mounting lever	1
0401-5301-001	Tire inflating clip-on connector	1
0401-5301-002	Tire filling hose manometer	1
0401-5211-001	Thumb-lock air chuck	10



VALVES FOR TRUCKS

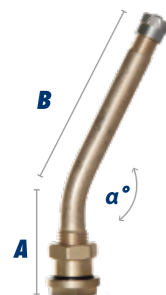
RIM VALVES FOR TUBELESS TIRES OF TRUCKS



DROP-CENTRE RIMS Ø 9,7 MM

ART.-NO.	ETRTO	A IN MM	QTY	MAX. PRESSURE
0401-5133-001	V3.20.1	36	10	14 bar
0401-5133-002	90MS9,7	85	10	14 bar

Installation torque: 12-15 Nm



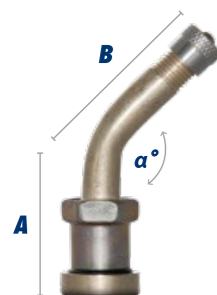
ART.-NO.	ETRTO	A IN MM	B IN MM	α°	QTY	MAX. PRESSURE
0401-5133-021	V3.20.4	25	60	153°	10	14 bar
0401-5133-022	V3.20.5	25	40	153°	10	14 bar
0401-5133-023	V3.20.6	25	85	153°	10	14 bar
0401-5133-024	V3.20.7	25	50	153°	10	14 bar
0401-5133-025	V3.20.12	25	70	153°	10	14 bar

Installation torque: 12-15 Nm



ART.-NO.	TR	A IN MM	QTY	MAX. PRESSURE
0401-5133-061	TR542	32	10	14 bar

Installation torque: 9-14 Nm
For ALCOA rims



ART.-NO.	ETRTO	A IN MM	B IN MM	α°	QTY	MAX. PRESSURE
0401-5133-041	V3.22.1	25	28	135°	10	14 bar

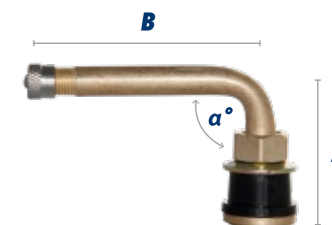
Installation torque: 12-15 Nm
For disc-wheels of Mercedes-Benz (Actros), Scania, MAN, Volvo ...

RIM VALVES FOR TUBELESS TIRES OF TRUCKS

DROP-CENTRE RIMS Ø 15,7 MM

ART.-NO.	TR	ETRTO	A IN MM	B IN MM	α°	QTY	MAX. PRESSURE
0401-5133-101	TR570C	V3.21.9	33	51	90°	10	14 bar
0401-5133-102	TR571C	V3.21.10	33	58	90°	10	14 bar
0401-5133-103	TR572C	V3.21.11	33	67	90°	10	14 bar
0401-5133-104	TR573C	V3.21.12	33	83	90°	10	14 bar

Installation torque: 4-6 Nm



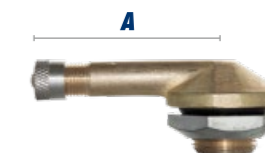
ART.-NR.	TR	ETRTO	A IN MM	QTY	MAX. PRESSURE
0401-5133-081	TR575	V3.21.1	29	10	14 bar

Installation torque: 4-6 Nm



ART.-NR.	ETRTO	A IN MM	QTY	MAX. PRESSURE
0401-5133-121	V3.12.1	40	10	14 bar
0401-5133-122	V3.12.2	95	10	14 bar

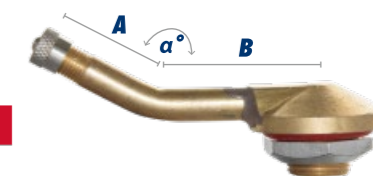
Installation torque: 25-31 Nm



FLAT BASE RIMS Ø 20,5 MM

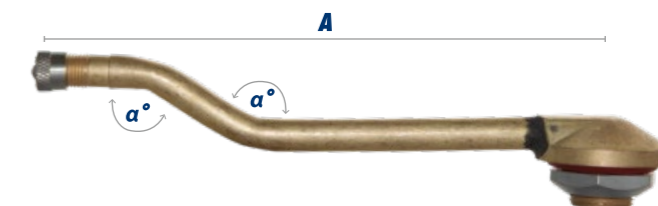
ART.-NR.	ETRTO	A IN MM	B IN MM	α°	QTY	MAX. PRESSURE
0401-5133-142	V3.16.1	29	36	150°	10	14 bar

Installation torque: 25-31 Nm



ART.-NR.	ETRTO	A IN MM	α°	QTY	MAX. PRESSURE
0401-5133-162	V3.18.2	127	146°	10	14 bar

Installation torque: 25-31 Nm



VALVE ACCESSORIES FOR TRUCKS

VALVE EXTENSIONS AND ACCESSORIES



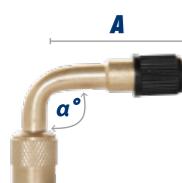
ART.-NO.	DESCRIPTION	TOTAL LENGTH	EFFECTIVE LENGTH	QTY	MAX. PRESSURE
0401-5233-007	Flexible rubber valve extension	85 mm	79 mm	10	14 bar
0401-5233-008	Flexible rubber valve extension	105 mm	99 mm	10	14 bar
0401-5233-009	Flexible rubber valve extension	125 mm	119 mm	10	14 bar
0401-5233-010	Flexible rubber valve extension	140 mm	134 mm	10	14 bar
0401-5233-011	Flexible rubber valve extension	180 mm	174 mm	10	14 bar
0401-5233-012	Flexible rubber valve extension	210 mm	204 mm	10	14 bar



ART.-NO.	DESCRIPTION	TOTAL LENGTH	EFFECTIVE LENGTH	QTY
0401-5233-021	Plastic valve extension	115 mm	98 mm	10
0401-5233-022	Plastic valve extension	125 mm	108 mm	10
0401-5233-023	Plastic valve extension	150 mm	133 mm	10
0401-5233-024	Plastic valve extension	170 mm	153 mm	10



ART.-NO.	DESCRIPTION	TOTAL LENGTH	EFFECTIVE LENGTH	WQTY
0401-5233-043	Plastic Extension cap	28 mm	19 mm	10
0401-5233-042	Plastic Extension cap	40 mm	32 mm	10



ART.-NO.	DESCRIPTION	A IN MM	α°	QTY	MAX. PRESSURE
0401-5233-061	Brass valve extension	34	90	10	14 bar
0401-5233-062	Brass valve extension	34	45	10	14 bar



ART.-NO.	DESCRIPTION	QTY
0401-5233-041	Holder for valve extension	10

VALVES FOR TRACTORS

AIR/WATER RIM VALVE FOR TRACTORS Ø 15,7 MM

ART.-NR.	TR	ETRTO	A IN MM	QTY	MAX. PRESSURE
0401-5143-001	TR618A	V5.01.1	50,5	10	14 bar

Installation torque: 5-8,5 Nm



ART.-NO.	TR	ETRTO	A IN MM	B IN MM	α°	QTY	MAX. PRESSURE
0401-5143-021	TR623A	V5.02.3	39	54	115°	10	14 bar

Installation torque: 5-8,5 Nm



ART.-NO.	DESCRIPTION	QTY	MAX. PRESSURE
0401-5143-031	Rubber valve for tractors, 15,7 mm	10	4,5 bar



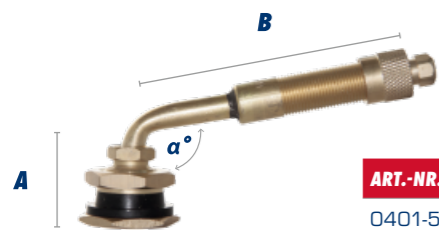
VALVE CORE HOUSING

ART.-NR.	TR	ETRTO	A IN MM	QTY	MAX. PRESSURE
0401-5243-001	TRCH3	V4.02.1	20,5	10	14 bar



VALVES FOR EARTHMOVERS

RIM VALVES FOR EARTHMOVERS Ø20,5 MM



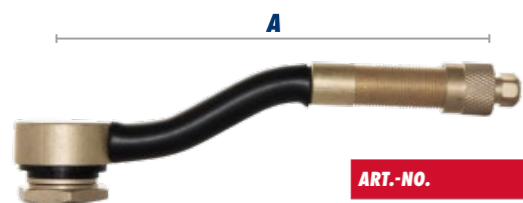
ART.-NR.	TR	ETRTO	A IN MM	B IN MM	α°	QTY
0401-5153-001	TRJ650-03	V5.04.1	27	79	100°	10
0401-5153-002	TRJ651-03	V5.04.2	32	119	90°	10

Installation torque: 20-23 Nm



ART.-NO.	TR	ETRTO	A IN MM	QTY
0401-5153-021	TRJ670-03	V5.03.1	47	10

Installation torque: 20-23Nm



ART.-NO.	TR	ETRTO	A IN MM	QTY
0401-5153-041	TRJ690	V5.05.1	119	10

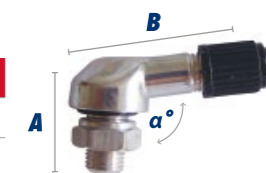
Installation torque: 20-23 Nm

VALVES FOR MOTORCYCLES & SCOOTER

ALUMINIUM RIM VALVE Ø8,3 MM

ART.-NO.	DESCRIPTION	A IN MM	B IN MM	α°	QTY
0401-5120-041	25MS8,3	23	25	97°	100

Installation torque: 3-5 Nm

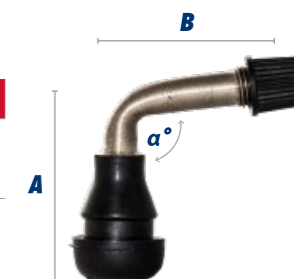


RIM VALVE Ø8,8 MM

ART.-NO.	TR	A IN MM	QTY
0401-5120-001	TR438	40,5	100

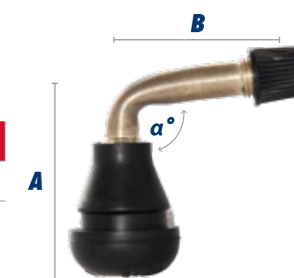


ART.-NO.	DESCRIPTION	A IN MM	B IN MM	α°	QTY
0401-5120-021	Rim valve for 2-wheelers, Snap-In	30	30	90°	100



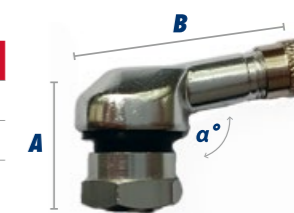
RIM VALVE Ø11,3 MM

ART.-NO.	TR	A IN MM	B IN MM	α°	QTY
0401-5120-011	TR412L	31	30	90°	100



ART.-NO.	DESCRIPTION	A IN MM	B IN MM	α°	QTY
0401-5120-031	25MS11,3	22	25	97°	100

Installation torque: 3-5 Nm



100% VEHICLE COVERAGE

HOFMANN POWER WEIGHT is the only supplier who provides a 100% coverage for all European vehicles from 2014 onwards.

HIGHEST OE-QUALITY

Spare parts in OE quality guarantee best work results and maximum reliability – even under extreme conditions.

LATEST CORROSION PROTECTION TECHNOLOGY

All metal components are treated with the latest corrosion protection technology being able to satisfy also the highest demands.

REDUCED STOCK-KEEPING

Demand-optimized box filling for efficient warehousing.

WHY TPMS-SERVICE KITS?

When a tire is replaced on a vehicle without TPMS, it is normal to replace the rubber valve. In the case of a direct TPMS system, some components of the sensor must also be replaced. Every time a tire is replaced, the suitable TPMS service kit must be used to replace the wear parts (nut, O-ring, nickel plated valve core, cap). This ensures safety, prevents breakdowns and avoids larger and more expensive consequential damages (for example complete replacement of the sensor, due to corroded valve core).

CAUSES FOR MALFUNCTIONS:

- Corrosion of metal components
- Embrittlement of rubber seals

POSSIBLE CONSEQUENCES OF MALFUNCTIONS:

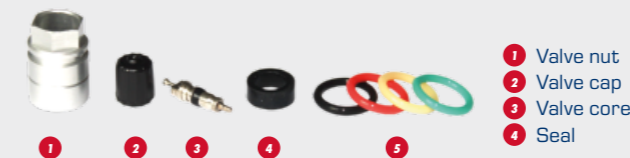
- Damage and replacement of the complete sensor
- Loss of tire pressure
- Flat tire
- Loss of control over vehicle

OLD VERSUS NEW:



ACCORDING TO THE AUTOMOBILE MANUFACTURERS' SPECIFICATIONS, TPMS SERVICE KITS MUST BE REPLACED DURING EVERY TIRE CHANGE – FOR YOUR OWN SAFETY!

A TPMS SERVICE KIT USUALLY CONTAINS THE FOLLOWING COMPONENTS:



- 1 Valve nut
- 2 Valve cap
- 3 Valve core
- 4 Seal

- 5 Some service kits also include O-rings in 4 different colours*

* The position of the O-Ring is on the outside of the nut. Each colour describes the position of one wheel. The combination of the position of the wheel and the colour of the O-ring is as follow: Green = Front left; Yellow = Front right; Red = Rear left; Black = Rear right

UNIVERSAL SERVICE KIT U1



VIDEO-TUTORIAL 5 "TPMS U1"

Install the RDKS U1 Service Kit from HOFMANN POWER WEIGHT correctly!
We show you how it's done.

CLICK ME

CHALLENGES FOR THE WORKSHOP

- Too many different TPMS service kits required for the coverage of all sensors on the market
- Uncertainty in selecting and using the right service kit
- High stock level means a lot of tied up capital
- Expensive training of specialists

ADVANTAGES OF THE UNIVERSAL SERVICE KIT U1

- 97% market coverage of all metal valves of TPMS sensors
- Universal solution for 36 different service kits
- Costs reduction by reducing service kit diversity
- Reduction of unused warehouse stock
- Simplified handling and application
- Avoidance of loss in revenue due to missing service kits



ART.-NO.	DESCRIPTION	QTY
0401-0022-482	Universal Service Kit U1	20

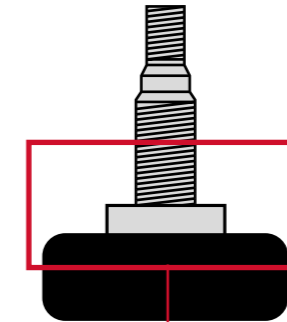
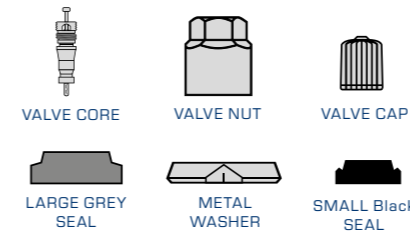
HOW THE UNIVERSAL SERVICE KIT U1 WORKS

- Our engineers identified the most frequently used service parts for TPMS sensors and combined them in one service kit.
- The instructions help to identify the correct spare parts for the sensor service in a quick and easy manner – the parts that are not required are disposed off.
- Therefore you can use our Universal Service Kit U1 with most metal valves.
- For valves that are not serviced with the Universal Service Kit U1 please use the appropriate OE service kit.

According to the EU Directive 2014/45/EU, which has been in force since 20.05.2018, a non-functional TPMS system is classified as a major deficiency in the main investigation.

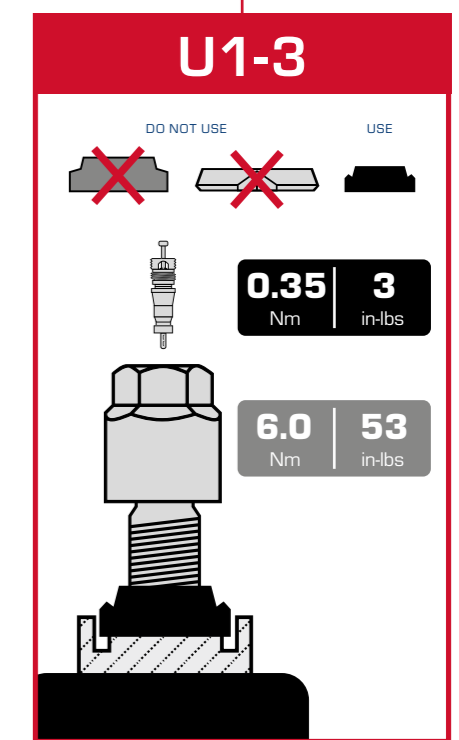
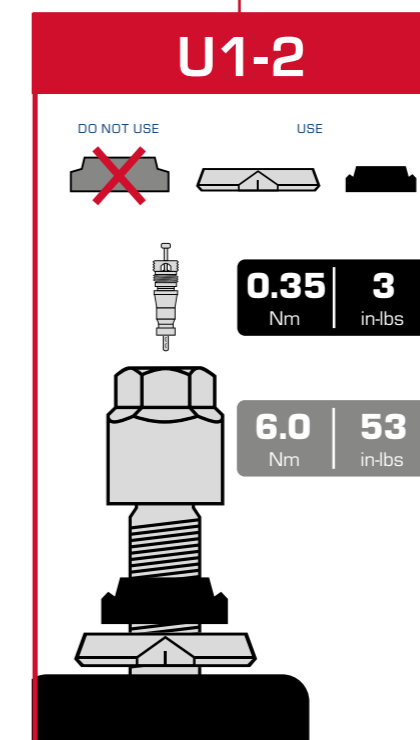
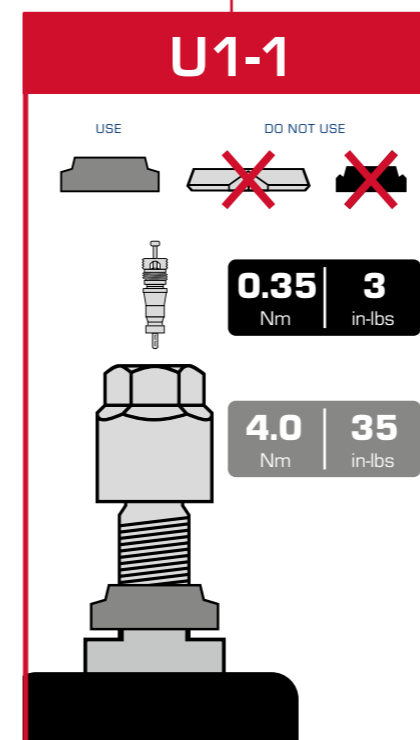
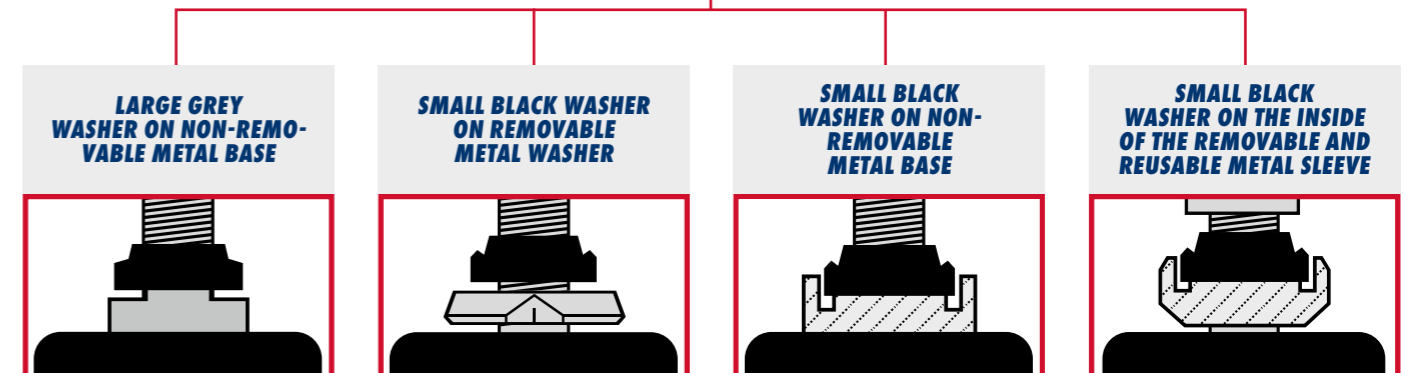
INSTRUCTION UNIVERSAL SERVICE KIT U1

COMPONENTS



START HERE:

Once the sensor has been removed from the wheel, the required spare parts for maintenance should be identified properly.



TPMS REFILL KITS



100 % market coverage for direct TPMS.

OE quality – From production to corrosion resistance to packaging.

With the RDKS refill packs ensure that individual RDKS service kit types can be ordered. The refill kits contain 20 service kits of one type each.

ART.-NO.	DESCRIPTION	TYPE	EXEMPLARY VEHICLES	SCHRADER-NO.		QTY	CONTENT	U1 COMPATIBLE
				OLD	NEW			
CONTINENTAL								
0401-0022-407	TPMS-SK for Conti TG1D	C11	Cadillac, Chevrolet, GMC	-	-	20		no
0401-0022-425	TPMS-SK for Conti TG1B	C01	Citroen, Fiat, Lancia, Ford, Peugeot, Mazda, Jaguar, Land Rover	65659-KD	5006	20		yes
0401-0022-426	TPMS-SK for Conti TG1B	C02	VW, Daimler	65660-KD	5007	20		yes
0401-0022-428	TPMS-SK for Conti TG1B	C03	Hyundai, Kia	65768-KU	5014	20		yes
0401-0022-429	TPMS-SK for Conti MB	C10	Renault	65958-KU	5015	20		no
0401-0022-432	TPMS-SK for Conti TG1C	C05	Renault	65963-KU	5018	20		yes
0401-0022-435	TPMS-SK for Conti TG1C	C06	Mazda	66072-KU	5022	20		yes
0401-0022-436	TPMS-SK for Conti TG1C	C07	Hyundai, Kia	66071-KU	5021	20		yes
0401-0022-437	TPMS-SK for Conti TG1C	C08	Volvo, Ford, Jaguar, Land Rover	66070-KU	5020	20		yes
0401-0022-447	TPMS-SK for Conti TG1B	C04	Buick, Chevrolet, Chrysler, Dodge, Jeep, Land Rover, Mazda	-	-	20		yes
0401-0022-448	TPMS-SK for Conti TG1C Uni-Sensor	C09	Renault, Mazda, Hyundai, Kia, Volvo, Ford, Jaguar, Land Rover	-	-	20		no
HUF								
0401-0022-403	TPMS-SK Huf Gen1 Ventil	H01	Audi, VW, BMW, Porsche	-	-	20		yes
0401-0022-409	TPMS-SK Huf Gen1 Ventil L=43 mm	H03	Audi, VW, BMW, Porsche	65731-67	5009	20		no
0401-0022-410	TPMS-SK Huf Gen1 Ventil L=48 mm	H04	Audi, VW, BMW, Porsche	65732-67	5010	20		no
0401-0022-411	TPMS-SK Huf Gen1 Ventil L=49 mm	H05	Audi, VW, BMW, Porsche	65733-67	5011	20		no
0401-0022-412	TPMS-SK Huf Gen1 Ventil L=51 mm	H06	Audi, VW, BMW, Porsche	65734-67	5012	20		no
0401-0022-413	TPMS-SK Huf Gen1 Ventil L=56 mm	H07	Audi, VW, BMW, Porsche	66151-67	5013	20		yes
0401-0022-441	TPMS-SK Huf Gen2 Ventil	H02	Audi, VW, BMW, Porsche	-	-	20		no

EXPERT TIP

Did you know that the TPMS Universal Service Kit U1 is suitable for 97% of all metal valve stems of TPMS sensors? Use our shadow template to identify the sensor.

ART.-NO.	DESCRIPTION	TYPE	EXAMPLARY VEHICLES	SCHRADER-NO.		QTY	CONTENT	U1 COMPATIBLE
				OLD	NEW			
SCHRADER								
0401-0022-405	TPMS-SK for Schrader Gen4	S14	Peugeot, Opel, Hyundai, Citroen, Chevrolet	66118-68	5028	20		no
0401-0022-416	TPMS-SK for Schrader Gen4	S15	Peugeot, Opel, Hyundai, Citroen, Chevrolet	66086-68	5024	20		no
0401-0022-419	TPMS-SK for Schrader Gen2	S04	Cadillac, Chevrolet, Chrysler, Dodge, Mitsubishi	65961-KD	5016	20		yes
0401-0022-420	TPMS-SK for Schrader Gen2	S05	Renault	65654-KD	5001	20		yes
0401-0022-421	TPMS-SK for Schrader Gen2	S06	Renault	65655-KD	5002	20		yes
0401-0022-422	TPMS-SK for Schrader Gen2	S07	Infiniti, Nissan	-	-	20		yes
0401-0022-423	TPMS-SK for Schrader Gen2	S08	Lotus, Nissan, Volvo, Opel, Chevrolet, Peugeot	65657-KD	5004	20		yes
0401-0022-424	TPMS-SK for Schrader GenJ	S10	Chevrolet, GMC, Hummer	-	-	20		yes
0401-0022-427	TPMS-SK Schrader GenA Ventilschaft	S02	Mercedes-Benz, Smart, Dodge, Jeep	43148-67	-	20		no
0401-0022-431	TPMS-SK for Schrader Gen Alpha	S01	Mercedes-Benz, Smart, Dodge, Jeep	65962-KD	5017	20		yes
0401-0022-433	TPMS-SK for Schrader Gen2	S09	Saab, Saturn, Suzuki	-	-	20		yes
0401-0022-438	TPMS-SK for Schrader GenJ	S11	Cadillac, Chevrolet	66700-KD	5030	20		yes
0401-0022-401	TPMS-SK for Schrader Snap-in HS	S12	Ford	66742-68	5033	20		no
0401-0022-404	TPMS-SK for Schrader Faraday	S13	Ford	66743-68	5031	20		yes
0401-0022-406	TPMS-SK for Schrader Gen Gamma	S03	GM, Chevrolet, BMW, Chrysler/Fiat, Mercedes	-	5060	20		yes
OTHERS (TRW, PACIFIC,...)								
0401-0022-415	TPMS-SK for TRW Gen2/3	001	Acura, Honda, KIA, Hyundai	-	-	20		yes
0401-0022-434	TPMS-SK for TRW Gen4 Snap-in	002	Jeep, Ram	-	-	20		no
0401-0022-443	TPMS-SK for Pacific Gen1/2/3/4	003	Toyota, Honda, Lexus	-	-	20		yes
0401-0022-477	TPMS-SK for Pacific Gen3	004	Nissan, Infiniti	-	-	20		yes
0401-0022-445	TPMS-SK for Cub Uni-Sensor	005	-	-	-	20		yes
0401-0022-446	TPMS-SK for Hamaton T-PRO/EU-PRO	006	-	-	-	20		yes
0401-0022-439	Valve core, nickel plated	-	All Vehicles	-	-	500		no
0401-0022-440	Plastic valce cap, grey	-	All Vehicles	-	-	500		no

TPMS STARTER KIT

The TPMS Starter Kit provides a wide assortment of common service kits. With this choice of service kits, over 85% of all European new cars can be covered. The amount of the single service kits has been defined according to the market demand.



ART.-NO.	DESCRIPTION
0401-0022-450	TPMS Starter Kit

Contents: 104 service kits + small parts

ART.-NO.	DESCRIPTION	EXEMPLARY VEHICLES	SCHRADER-NO.		QTY
			OLD	NEW	
0401-0022-405	TPMS-SK for Schrader Gen4	Peugeot, Opel, Hyundai, Citroen, Chevrolet	66118-68	5026	4
0401-0022-409	TPMS-SK Huf Gen1 Ventil L=43mm	Audi, VW, BMW, Porsche	65731-67	5009	4
0401-0022-421	TPMS-SK for Schrader Gen2	Renault	65655-KD	5002	8
0401-0022-423	TPMS-SK for Schrader Gen2	Lotus, Nissan, Volvo, Opel, Chevrolet, Peugeot	65657-KD	5004	8
0401-0022-425	TPMS-SK for Conti TG1B	Ford, Volvo, Mazda, Jaguar, Citroen, Fiat, Lancia, Land Rover	65659-KD	5006	8
0401-0022-431	TPMS-SK for Schrader Gen Alpha	Mercedes-Benz, Smart	65962-KD	5017	16
0401-0022-432	TPMS-SK for Conti TG1C	Renault	65963-KU	5018	8
0401-0022-435	TPMS-SK for Conti TG1C	Mazda	66072-KU	5022	8
0401-0022-436	TPMS-SK for Conti TG1C	Hyundai, Kia	66071-KU	5021	8
0401-0022-437	TPMS-SK for Conti TG1C	Volvo, Ford, Jaguar, Land Rover	66070-KU	5020	8
0401-0022-441	TPMS-SK for Huf Gen2 Ventil	Audi, VW, BMW, Porsche	65731-67 65732-67 65733-67 65734-67	5009 5010 5011 5012	16
0401-0022-477	TPMS-SK for Pacific Gen3	Toyota, Nissan	-	-	8
0401-0022-439	Valve core, nickel-plated	All vehicles	-	-	500
0401-0022-440	Plastic valve cap, grey	All vehicles	-	-	500

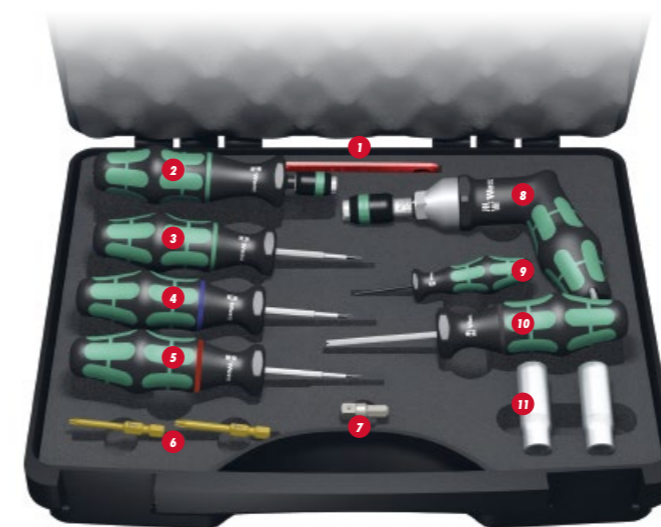
TPMS TOOL KIT



ART.-NO.	DESCRIPTION
0401-0022-500	TPMS Tool Kit

- **100% SENSOR COVERAGE**
 - Maintenance of all OE and universal sensors possible
 - 13 part assortment for all needs
- **OE QUALITY**
 - Made in Germany
 - Proven Wera quality from the market leader

- **TIME SAVING**
 - Colour code on TPMS service kits and tools
 - Quick and easy tool identification
 - No time consuming torque set up
- **MISTAKE PROTECTION**
 - Preset tools for all relevant torque values
 - The professional screw mechanism avoids the overtightening of the components

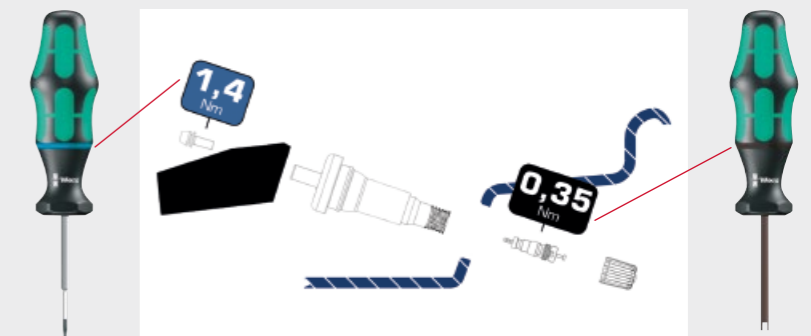


CONTENT

- 1 Sealing rubber removal tool
- 2 Fixed Torque Screwdriver for Alligator Metal Valves
- 3 Fixed Torque Screwdriver for CUB Valves
- 4 Fixed Torque Screwdriver for Schrader Valves
- 5 Fixed Torque Screwdriver for HUF Rubber Valves
- 6 Torx Bits (TX15/TX20)
- 7 Adapter for Sockets
- 8 Variable Torque Screwdriver for all nuts
- 9 Fixing Tool for all HUF Sensors
- 10 Fixed Torque Screwdriver for all Valve Cores
- 11 Socket (11mm/12mm)

COLOUR CODE

- Continental
- Schrader
- HUF
- Others (TRW, PACIFIC, ...)



CUSTOMER SERVICE & ORDERING

HOFMANN POWER WEIGHT is committed to providing its customers with superior service. Regardless of your question, please contact the professional customer service department:

You can reach us through the following phone number and e-mail address:

Phone: +49 931 - 32104-230

E-Mail: cseu@wegmann-automotive.com

www.hofmann-powerweight.com

HOW TO ORDER



TYPE 161

Universal weight for European steel rims, available in Silver and Black.

Available sizes: 5, 10, 15, 20, 25, 30, 35, 40, 45, 50, 55, 60 g

Packaging units: 5 - 30 grams, 100 pieces/box
35 - 60 grams, 50 pieces/box

Part numbers: Silver 5161-OXX0-001
Black 5161-OXX3-001

1 SELECT PART NUMBER

This instruction refers to standard variations. Part numbers can differ in client-specific variations.

2 SELECT GRAMMATURE (only for knock-on-weights)

Select the preferred grammature and add it to the part number in place of XX at position six and seven.

3 FINAL PART NUMBER

5161-0403-001 for a 40 grams knock-on weight 161, Black



HOFMANN POWER WEIGHT is
a brand of WEGMANN automotive.

WEGMANN automotive GmbH

Rudolf-Diesel-Straße 6
97209 Veitshöchheim
GERMANY

Phone: +49 (0) 931-32104-0

E-Mail: info@wegmann-automotive.com

www.hofmann-powerweight.com